

DYNAMIC
NO STRINGS ATTACHED

Tools	1
Special Tools	1
Section 1	Sweep	1.1
	Sweep Bar & Arm Assemblies	1.1
Section 2	Front End	2.1
	Front End Drive Assemblies	2.1
	Spot & Respot Tie Rod Assemblies	2.4
Section 3	Bin & Shuttle	3.1
	Bin Assembly	3.1
	Shuttle & Solenoid	3.4
Section 4	Table	4.1
	Table Assembly	4.1
	Yoke & Bearing Assembly	4.4
	Table Torque Tube Assembly	4.7
	Table Wireway Assembly	4.8
	Respot Cell Assembly	4.10
Section 5	Distributor	5.1
	Distributor Assembly	5.1
	Distributive Drive Assemblies 70's	5.8
	Distributive Drive Assemblies 90's	5.9

Section 6	Ball Lift	6.1
	Ball Lift (PBL)	6.1
	Ball Tensioner & Belt Tightener	6.5
	Light Ball Sensor	6.7
	Ratchet Drive Assembly	6.11
	Old Style Kicker Ball Lift	6.13
	Track Rail Assembly	6.14
Section 7	Back End	7.1
	Pit Area	7.1
	Cushion Assembly	7.5
	Pin Wheel Assembly 70's	7.8
	Pin Wheel Assembly 90's	7.9
Section 8	Front of House	8.1
	Bumper Assembly	8.1
	Ball Return	8.3

SPECIAL TOOLS

Tools for AMF Pinspotters



030-003-943



070-006-038



070-006-519



610-600-000



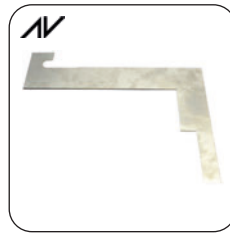
784-003-000



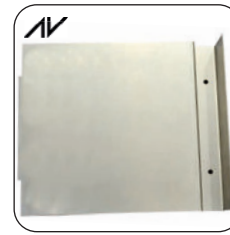
792-502-002



792-505-005



T0002



T0003



T0004



T0001

Tools for AMF Pinspotters

030-003-943	Crank Handle - Tool	784-003-050	Flag Tool Handle - Tool
070-006-038	Belt Lacing Tool - Tool	792-502-002	Carpet Flag - Tool
070-006-519	Respot Gauge - Tool	792-505-005	Spring Puller Hook - Tool
T0004	Guide 90ST Table Setting Gauge	T0002	Table Setting 'Suffolk' Gauge J
610-600-000	PBL Vise Holder - Tool	T0003	Table Setting 'Suffolk' Gauge R
784-003-000	Rivet & Carpet Install Tool - Front Roller & Cushion	T0001	7/32 Allen Key Socket Driver - Workshop

SWEEP BAR AND ARM ASSEMBLIES

Pinspotter Parts for AMF Equipment



000-022-811



000-023-104SL



000-023-105SL



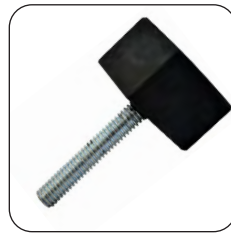
000-023-114SL



000-023-160
000-023-161



000-023-182N



000-023-216



000-025-004
000-025-005



070-003-103



070-003-106



070-003-158



070-003-159



070-003-162



070-003-173



070-003-184



070-003-189



070-003-190
070-003-191



070-003-195



070-003-222



070-003-223



070-003-231



070-003-232



070-003-234



070-003-235



070-003-238

SWEEP BAR AND ARM ASSEMBLIES

Pinspotter Parts for AMF Equipment



070-003-242



070-006-121



070-007-276



070-007-278



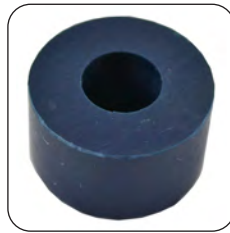
070-007-280



070-007-281



070-007-282



070-007-283



090-003-906



090-005-257



090-005-260
090-005-261



090-006-128



090-006-136



300-001-170U



300-001-171U



300-000-182

SWEEP BAR AND ARM ASSEMBLIES

Pinspotter Parts for AMF Equipment

000-022-811	Dura Pillow Block 	090-003-906	Fixed Rod End Asm - Sweep
000-023-104SL	S-Lube Flange Bearing - Sweep 	090-005-257	Rod End 7/16 RH - Sweep
000-023-105SL	S-Lube Sleeve Bushing - Sweep 	090-005-260	Rod End RH 1/2 Male - Sweep
000-023-114SL	Flange Bearing .628 x .8155 x.06 - Sweep 	090-005-261	Rod End LH 1/2 Male - Sweep
000-023-160	Rod End RH - Sweep	090-006-128	Bracket Slider Sweep Link - Sweep
000-023-161	Rod End LH - Sweep	090-006-129	Please refer to: 300-001-170U
000-023-182N	Nylon Slide Bar - Sweep 	090-006-130	Please refer to: 300-001-171U
000-023-216	Bumper - Sweep	090-006-136	Shock Mount Short Stud - Sweep 
000-025-004	Rod End RH 7/16 Male - Sweep, Spot & Respot	300-001-170U	Universal Sweep Bracket RH (10 Pin) - Sweep 
000-025-005	Rod End LH 7/16 Male - Sweep, Spot & Respot	300-001-171U	Universal Sweep Bracket LH (7 Pin) - Sweep 
070-003-103	Pin Bearing - Sweep	300-000-182	Sweep Bar One Piece - Sweep
070-003-106	Shaft Main Pivot - Sweep	808-557-140	Button Head Cap Screw 5/16-18 x 7/8 - Hardware
070-003-158	Link Drive Asm - Sweep	808-557-160	Button Head Cap Screw 5/16-18 x 1 - Hardware
070-003-159	Tube Motor Rod - Sweep	809-857-245	Hex Head Cap Screw 5/16-18 x1-1/2 - Hardware
070-003-162	Connect Rod Asm - Sweep	809-865-285	Hex Head Cap Screw 3/8-16 x 1-3/4 - Hardware
070-003-173	Sleeve Bearing .438 x .624 x 2 - Sweep	809-865-445	Hex Head Cap Screw 3/8-16 x2-3/4 - Hardware
070-003-184	Support Link Asm - Sweep	809-869-245	Hex Head Cap Screw 7/16-14 x1-1/2 - Hardware
070-003-189	Pin Bearing - Sweep	809-869-325	Hex Head Cap Screw 7/16-14 x 2 - Hardware
070-003-190	Bracket Shock RH-Sweep	809-869-365	Hex Head Cap Screw 7/16-14 x2-1/4 - Hardware
070-003-191	Bracket Shock LH-Sweep	809-869-405	Hex Head Cap Screw 7/16-14 x 2-1/2 - Hardware
070-003-195	Shock Mount - Sweep 	830-057-002	Please refer to: 844-057-002
070-003-222	Bracket Shock Mounting - Sweep	835-570-002	Jam Hex Nut 7/16-20 - Hardware
070-003-223	Link Threaded (Popeye's Pipe) - Sweep	835-574-002	Jam Hex Nut 1/2-20 - Hardware
070-003-231	Pin Bearing - Sweep	835-582-002	Jam Hex Nut 5/8-18 - Hardware
070-003-232	Spacer Main Pivot Long - Sweep	835-670-002	Jam Hex Nut Left Hand 7/16-20 - Hardware
070-003-234	Flange Bearing .437x.75x.62 - Sweep	835-674-002	Jam Hex Nut Left Hand 1/2-20 - Hardware
070-003-235	Screw 7/16-14 - Sweep	839-057-002	P Type Nyloc Nut 5/16-18 - Hardware
070-003-238	Stabilizing Link Asm Upper - Sweep	839-665-002	Flex Lock Nut 3/8-16 - Hardware
070-003-242	Link Asm Cast - Sweep	844-057-002	P Type Nyloc Nut 5/16-18 - Hardware
070-006-121	Washer Clutch - Dist & Sweep	844-065-002	P Type Nyloc Nut 3/8-16 - Hardware
070-007-276	Rod Link Asm - Sweep	844-069-002	P Type Nyloc Nut 7/16-14 - Hardware
070-007-278	Tube Weldment Link - Sweep	844-073-002	P Type Nyloc Nut 1/2-13 - Hardware
070-007-280	Sweep Link Telescope Asm - Sweep	919-005-600	External Retaining Ring #5100-62 - Hardware
070-007-281	Rod End Male Stubby S6179 - Sweep	919-010-700	Retaining Ring #5133-62 - Hardware
070-007-282	Rod End RH 7/16 Female AF-7-G-8 - Sweep	948-761-112	Washer Wrought 5/16 - Hardware
070-007-283	Bumper Link Asm - Sweep	948-767-132	Washer 13/32 - Hardware
090-001-170	Please refer to: 300-001-170U	949-100-002	Washer 3/8 - Hardware
090-001-171	Please refer to: 300-001-171U		

DB - Satisfaction Guaranteed

FRONT END DRIVE ASSEMBLIES

Pinspotter Parts for AMF Equipment



000-021-645



000-021-714



000-021-878



000-021-880



000-021-881



000-021-905



000-024-657



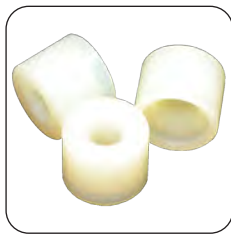
000-026-042



000-026-247



070-001-707



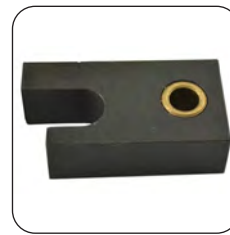
070-001-857



070-001-893



070-001-894



070-001-898



070-001-917



070-001-931



070-001-932



070-002-652



070-002-824



070-006-048



070-006-310



070-006-493



070-006-729



070-007-250



070-007-303

FRONT END DRIVE ASSEMBLIES

Pinspotter Parts for AMF Equipment



070-007-310



070-007-311



070-007-755



070-008-321



070-008-325



190-001-490

Pinspotter Parts for AMF Equipment

000-021-645	Lever Asm Switch - Sweep & Table	070-001-931	Spring - Table Drive
000-021-714	Screw Adjusting - Table Drive	070-001-932	Pin Actuator Asm - Table Drive
000-021-878	Spacer Rod Asm - Table Drive	070-002-652	Bearing Sleeve .252 x315 x.5 - Table Drive
000-021-880	Rod End Asm - Table Drive - With grease nipple	070-002-778	Crank Housing & Cup Asm - Table Drive
000-021-881	Ball Bearing .625 x 1.375 - Table Drive	070-002-824	Cone Bearing & Seal Asm - Table Drive
000-021-905	Bearing - Front End	070-006-048	Bolt Special - Dist & Table
000-024-657	Spring Cam Lever - Table Drive & Sweep Cam	070-006-310	Spacer - Front End Drive
000-026-042	Micro Switch Small Tip - Table Drive	070-006-493	Ball Joint Asm - Spot & Respot
000-026-247	Switch - Front End	070-006-729	Disc Spring - Table Drive
070-001-668	Please refer to: 070-001-668SL	070-007-250	Link Hub Asm - Table Drive
070-001-707	Spring - Front End Drive	070-007-303	Spacer Front End - Spot & Respot
070-001-857	Nylon Roller - Dist & Table Drive	070-007-310	Flange Bearing .502 x .871 x 1.20 - Table
070-001-893	Cam Ball Asm - Table Drive	070-007-311	Sleeve Bearing
070-001-894	Pivot Pin - Table Drive	070-007-755	Yoke Weldment
070-001-898	Latch Asm - Table Drive	070-008-321	Arm - Latch
070-001-917	Compression Spring - Table Drive	070-008-325	Pin Actuator Asm - Table Drive
070-001-924	Flange Bearing .753x.9395x.58 - Torque Tube	190-001-490	Bearing
070-001-926	Pin - Torque Tube		

SPOT & RESPOT TIE ROD ASSEMBLIES

Pinspotter Parts for AMF Equipment



000-021-423



000-025-004



000-025-005



070-001-585



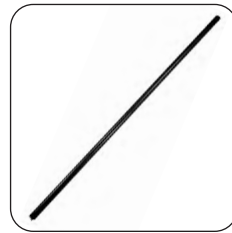
070-001-587



070-001-601



070-001-605



070-001-606



070-001-607



070-001-664



070-001-700



070-001-707



070-001-807



070-001-919



070-001-997



070-002-691



070-002-691SL



070-002-745



070-002-816



070-006-457ASM



070-006-493



070-007-303



610-704-002



907-000-900



BV090005025

SPOT & RESPOT TIE ROD ASSEMBLIES

Pinspotter Parts for AMF Equipment



090-005-264



090-005-265



090-005-565



090-005-576

Pinspotter Parts for AMF Equipment

000-021-423	Collar & Screw 5/8 x 11/8 x 1/2 - Shuttle & Belt Tensioner	090-005-565	Table Drive Shaft
000-025-004	Rod End RH 7/16 Male - Sweep, Spot & Respot	090-005-576	Spring Hanger New - Spot & Respot 
000-025-005	Rod End LH 7/16 Male - Sweep, Spot & Respot	610-704-002	Cam Follower Asm
070-001-585	Spot Link Pin	809-865-125	Hex Head Cap Screw 3/8-16 x 3/4 - Hardware
070-001-587	Pin Spring Hanger - Spot & Respot	809-865-245	Hex Head Cap Screw 3/8-16 x 1-1/2 - Hardware
070-001-601	Tie Rod Assembly - Respot	809-869-245	Hex Head Cap Screw 7/16-14 x 1-1/2 - Hardware
070-001-602	Please refer to: 090-005-252	809-869-285	Hex Head Cap Screw 7/16-14 x 1-3/4 - Hardware
070-001-605	Upper Spotting Link Asm	809-869-325	Hex Head Cap Screw 7/16-14 x 2 - Hardware
070-001-606	Tie Rod - Spot & Respot	809-869-365	Hex Head Cap Screw 7/16-14 x 2-1/4 - Hardware
070-001-607	Tie Rod - Spot & Respot	809-869-405	Hex Head Cap Screw 7/16-14 x 2-1/2 - Hardware
070-001-664	Clamp Stud Cam - Front End Drive	810-265-280	Socket Head Cap Screw 3/8-16 x 1-3/4 - Hardware
070-001-700	Table Drive Shaft	835-549-002	Jam Hex Nut 1/4-20 - Hardware
070-001-707	Respot Arm Spring	835-570-002	Jam Hex Nut 7/16-20 - Hardware
070-001-751	Please refer to: 090-005-576	835-670-002	Jam Hex Nut Left Hand 7/16-20 - Hardware
070-001-807	Spring Respot Finger - Table	839-665-002	Flex Lock Nut 3/8-16 - Hardware
070-001-919	Flange Bearing .627x.814x.870 - Spot & Respot	840-066-002	Flex Lock Thin Nut 3/8-24 - Hardware
070-001-997	Latch Asm Support Arm Asm - Spot & Respot	843-140-002	Keq Nut Washer #10-32 - Hardware
070-002-691	Bearing .627x.752x1/2 - Spot & Respot	844-065-002	P Type Nyloc Nut 3/8-16 - Hardware
070-002-691SL	S-Lube Flanged Bushing 	844-069-002	P Type Nyloc Nut 7/16-14 - Hardware
070-002-745	Flange Bearing .6265x.814x1/2 - Table	844-070-002	P Type Nyloc Nut 7/16-20 - Hardware
070-002-816	Cam Follower - Table	844-073-002	P Type Nyloc Nut 1/2-13 - Hardware
070-006-407	Please refer to: 070-006-427	907-000-900	Key #910 HyPro - Front End Drive, LBS & Kicker
070-006-457ASM	Shaft Table - Spot & Respot	913-423-120	Spring Pin .125 x 3/4 - Hardware
070-006-493	Ball Joint Asm - Spot & Respot	913-464-360	Spring Pin .375 x 2 1/4 - Hardware
070-007-303	Spacer Front End - Spot & Respot	948-767-132	Washer 3/8 - Hardware
090-005-025	Shaft Hardened Spot Respot- Front End	948-983-212	Washer 5/8 - Hardware
090-005-264	Rod End 7/16 RH - Sweep & Tie Rod	949-100-002	Washer 3/8 - Hardware
090-005-265	Rod End 7/16 LH - Sweep & Tie Rod	951-164-002	Spring Lock Washer 3/8 - Hardware

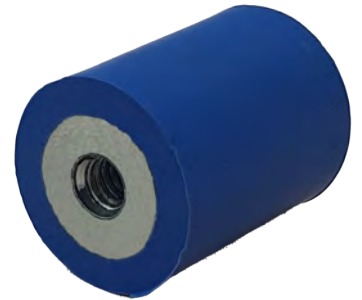
BIN ASSEMBLY



AV 000-021-992
Blue Urethane Grommet
• Soft, non-stick & hard wearing



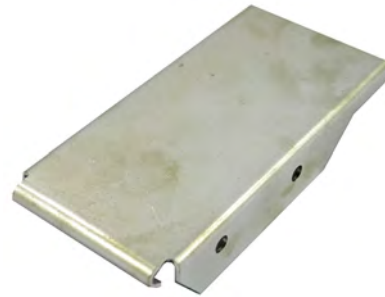
AV 070-006-353
Guide Pin
• Easy clean galvanised steel



AV 070-006-354
Shock Mount
• Submerged integral fixing



AV 022-610-005
Pin Pusher Kit (3)
• Reduces double shuttling on the back row



AV 070-006-364
Spacer But Pin Guide
• Easy clean galvanised steel



AV 070-006-380
Pin Guide Ear RH #4
• Easy clean galvanised steel



AV 070-006-381
Pin Guide Ear LH #6
• Easy clean galvanised steel



AV 070-006-386
Track Asm LH
• Fitted with replaceable rollers



AV 070-006-388
Track Asm RH
• Fitted with replaceable rollers

BIN ASSEMBLY

Pinspotter Parts for AMF Equipment



000-022-168



000-026-043



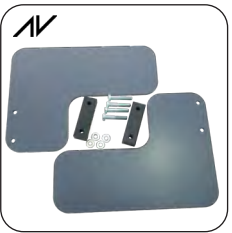
000-026-251



000-026-446



000-029-614



022-610-006



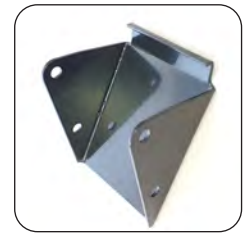
070-006-142



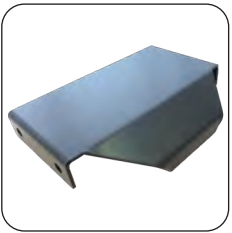
070-006-356



070-006-359



070-006-365



070-006-366



070-006-373



070-006-376



070-006-377



070-006-389



070-006-403

BIN ASSEMBLY

Pinspotter Parts for AMF Equipment

000-021-992	Blue Urethane Grommet - Bin & Pin Elevator 	070-006-388	Track Asm RH - Bin 
000-022-168	Spring Sweep Brake - Bin	070-006-389	Guide Pin #1- Bin
000-026-043	Micro Switch Big Tip - Bin	070-006-403	Stud Clamp - Bin
000-026-251	Roller Screw & Star Washer - Dist & Bin 	808-549-080	Button Head Cap Screw 1/4-20 x 1/2 - Hardware
000-026-446	Rod End RH 3/8 Female - Bin & Track Rail	809-849-085	Hex Head Cap Screw 1/4-20 x 1/2 - Hardware
000-029-614	Unibal Bearing 3/8 ID x 1.00 OD - Bin 	809-849-125	Hex Head Cap Screw 1/4-20 x 3/4 - Hardware
022-610-005	Pin Pusher Kit (3) 	809-849-165	Hex Head Cap Screw 1/4-20 x 1 - Hardware
022-610-006	2/3 Pin Deflector Kits (1 Pinspotter) - Bin Assembly 	809-849-285	Hex Head Cap Screw 1/4-20 x 1-3/4 - Hardware
070-006-142	Bumper - Multi Position	809-849-605	Hex Head Cap Screw 1/4-20 x 3-3/4 - Hardware
070-006-353	Guide Pin - Bin 	809-865-165	Hex Head Cap Screw 3/8-16 x 1 - Hardware
070-006-354	Shock Mount - Bin 	813-540-082	Pan Head Screw #10-32 x 1/2 CD - Hardware
070-006-356	Switch Actuator 9 Pin - Bin	831-565-002	Hex Nut 3/8-16 - Hardware
070-006-359	Bracket- Bin	835-566-002	Jam Hex Nut 3/8-24 - Hardware
070-006-363	Please refer to: 022-610-005 	840-049-002	Flex Lock Thin Nut 1/4-20 - Hardware
070-006-364	Spacer But Pin Guide - Bin 	843-127-002	Kep Nut Washer #6-32 - Hardware
070-006-365	Spacer, Head Pin Guide - Bin	843-133-002	Please refer to: 839-533-002
070-006-366	Spacer, Head Pin Guide - Bin	844-049-002	P Type Nyloc Nut 1/4-20 - Hardware
070-006-372	Stringer Centre RH + LH	844-065-002	P Type Nyloc Nut 3/8-16 - Hardware
070-006-373	Stringer Centre LH + RH	900-208-091	Flange Bearing .378 x.503 x 9/16 - Dist
070-006-376	Stringer-Outside RH (10 Side) - Bin	907-000-600	Key #706 HyPro - Yoke & Spotting Cup & Bin
070-006-377	Stringer Outside LH (7 Pin)	948-631-062	Washer 3/16 - Hardware
070-006-380	Pin Guide Ear RH #4 - Bin 	948-753-102	Washer 1/4 - Hardware
070-006-381	Pin Guide Ear LH #6 - Bin 	957-000-002	Lock Washer #6 External Tooth - Hardware
070-006-386	Track Asm LH - Bin 		

DB - Satisfaction Guaranteed

SHUTTLE & SOLENOID ASSEMBLY



AV 022-610-002
Rear Shuttle Mount Kit
• Adjustable, positive slide action



AV 070-006-727
Spotting Solenoid
• Single 240v voltage with shaft and connectors



AV 088-001-631
Shuttle Rod Asm
• New style with giant spring



AV 070-006-306GSK
Giant Spring Conversion Kit
• Convert your existing shuttle rod Asm



AV 070-006-001
Solenoid Link Asm
• Laser cut stainless steel components



AV 070-006-265
Pin Holder Slick Blue
• Durable smooth blue hard plastic



AV 070-006-268SR
Ultra Bin Strap, Zinc Plated
• Easy fit, pre threaded fixings



AV 070-006-259
Adjustable Shuttle Bracket
• Lock slotted fixing



AV 090-005-723UPG
Ultra Spotting Solenoid - Shuttle
• Revised mount position, simplified operation for 70's & 90's

DB – Better Value Parts

SHUTTLE & SOLENOID ASSEMBLY

Pinspotter Parts for AMF Equipment



000-021-423



000-021-442



000-021-645



000-023-139



000-024-657



000-026-042



070-001-664



070-001-699



070-001-774



070-001-777



070-006-046



070-006-116



070-006-142



070-006-253



070-006-255



070-006-256



070-006-257



070-006-258



070-006-259



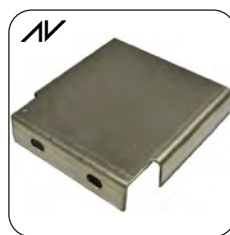
070-006-276



070-006-277



070-006-278



070-006-279



070-006-280



070-006-282

DB - Designed by Technicians for Technicians

SHUTTLE & SOLENOID ASSEMBLY

Pinspotter Parts for AMF Equipment



070-006-283



070-006-284



070-006-285



070-006-286



070-006-296



070-006-302



070-006-304



070-006-307



070-006-447



070-006-484



070-006-724



070-006-726



070-008-133



090-005-018



090-005-028



610-704-002



610-704-015



701-416-058

SHUTTLE & SOLENOID ASSEMBLY

Pinspotter Parts for AMF Equipment

000-021-423	Collar & Screw 5/8 x 1 1/8 x 1/2 - Shuttle & Belt Tensioner	070-006-306GSK	Giant Spring Conversion Kit 
000-021-442	Rubber Washer - Shuttle & Solenoid	070-006-307	Link Asm - Shuttle
000-021-645	Lever Asm Switch - Sweep & Table	070-006-447	Spring - Shuttle
000-023-139	Arm Crank - Front End Drive	070-006-484	Lever Asm Stop - Shuttle
000-024-657	Spring Cam Lever - Table Drive & Sweep Cam	070-006-724	Solenoid Small Stainless Link - Spotting Solenoid 
000-026-042	Micro Switch Small Tip - Table Drive	070-006-726	Spot Solenoid 60Hz 115V - Spotting Solenoid 
022-610-002	Rear Shuttle Mount Kit 	070-006-727	Spotting Solenoid - Solenoid & Shuttle
070-001-664	Clamp Stud Cam - Front End Drive	070-008-133	Spacer Link - Shuttle & Solenoid
070-001-699	Sweep Drive Shaft - Front End Drive	070-008-135	Link Asm- Shuttle & Solenoid
070-001-774	Link Asm - Shuttle & Solenoid	088-001-631	Shuttle Rod With Large Spring ASM - Shuttle 
070-001-777	Pin - Shuttle & Solenoid	088-500-157	Tube Shuttle Center - Shuttle
070-006-001	Solenoid Link ASM- Shuttle 	090-005-018	Solenoid Bracket - Spotting Solenoid
070-006-046	Rod End Support - Pin Elevator & Shuttle	090-005-028	Solenoid Pivot - Spotting Solenoid
070-006-116	Stud Clamp Carriage - Dist & Shuttle	090-005-263	Shuttle Rod ASM
070-006-142	Bumper - Multi Position	090-005-723UG	Ultra Spotting Solenoid - Shuttle 
070-006-253	Tube Cross Long- Shuttle	090-005-723	Solenoid Asm 115/230v 50/60Hz - Spotting Solenoid
070-006-255	Tube Side Long - Shuttle	610-704-002	Cam Follower Asm - Shuttle & Spot
070-006-256	Tube Outside - Shuttle	610-704-015	Kit Link Replacement Asm - Shuttle & Solenoid
070-006-257	Tube Center - Shuttle	701-416-058	Flange Bearing .502 x.627 x 1.0 - Shuttle & Solenoid
070-006-258	Tube Cross Short- Shuttle	809-849-245	Hex Head Cap Screw 1/4-20 x 1-1/2 - Hardware
070-006-259	Original Shuttle Bracket	809-849-285	Hex Head Cap Screw 1/4-20 x 1-3/4 - Hardware
070-006-261	Clamp End - Shuttle	809-865-205	Hex Head Cap Screw 3/8-16 x 1-1/4 - Hardware
070-006-265	Pin Holder Slick - Bin 	809-873-405	Hex Head Cap Screw 1/2-13 x 2-1/2 - Hardware
070-006-266	Strap 7 Hole Spring - Shuttle	813-933-162	Machine Hex Head Screw #8-32 x 1 CD - Hardware
070-006-268	Bin Strap Extra Wide - Bin 	814-333-122	Machine Hex Head Screw #8-32 x 3/4 - Hardware
070-006-268SR	Bin Strap Reinforced - Shuttle 	835-549-002	Jam Hex Nut 1/4-20 - Hardware
070-006-276	Spring Drive - Shuttle	835-566-002	Jam Hex Nut 3/8-24 - Hardware
070-006-277	Washer Spring - Shuttle 	840-065-002	Flex Lock Thin Nut 3/8-16 - Hardware
070-006-278	Lever Cam- Shuttle and Solenoid	844-049-002	P Type Nyloc Nut 1/4-20 - Hardware
070-006-279	Solenoid Guard- Shuttle & Solenoid 	844-073-002	P Type Nyloc Nut 1/2-13 - Hardware
070-006-280	Clip Spring Shuttle-Drive Shuttle & Solenoid	900-204-121	Flange Bearing .25 x.378 x3/4 - Shuttle & Solenoid
070-006-282	Solenoid Link Stainless - Spotting Solenoid 	900-210-161	Flange Bearing .628 x 1 BZ - PBL, Shuttle & Solenoid
070-006-283	Spring - Spotting Solenoid	907-000-200	Key #404 HyPro - Shuttle & Ratchet
070-006-284	Stud Clamp - Shuttle	907-000-900	Key #910 HyPro - Front End Drive, LBS & Kicker
070-006-285	Shaft-Shuttle & Solenoid	913-415-100	Spring Pin .094 x 5/8 - Hardware
070-006-286	Shaft Cam Lever - Shuttle	913-415-120	Spring Pin .094 x 3/4 - Hardware
070-006-296	Spring Cap - Spotting Solenoid	913-464-400	Spring Pin .375 x 2 1/2 - Hardware
070-006-302	Plug Shuttle Op Rod- Shuttle & Solenoid	963-200-002	X - Washer 1/8 9000-8 - Hardware
070-006-304	Rod Asm - Shuttle		

TABLE ASSEMBLY

Pinspotter Parts for AMF Equipment



000-021-645



000-022-737



000-022-738



000-024-657



000-026-042



070-001-591



070-001-804



070-001-807



070-001-871



070-002-577



070-002-579



070-002-583



070-002-585



070-002-590



070-002-592



070-002-594



070-002-596



070-002-630SL



070-002-652



070-002-671



070-002-680



070-002-681



070-002-702



070-002-715



070-002-732

DB – Developed in the United Kingdom

TABLE ASSEMBLY

Pinspotter Parts for AMF Equipment



070-002-733



070-002-734



070-002-745SL



070-002-815



070-002-816



070-007-303



070-007-616



070-007-622



070-007-623



070-007-752



090-002-028



090-005-264



090-005-265



090-005-503



090-005-504



090-005-571



090-005-600



730-027-019



879-849-487

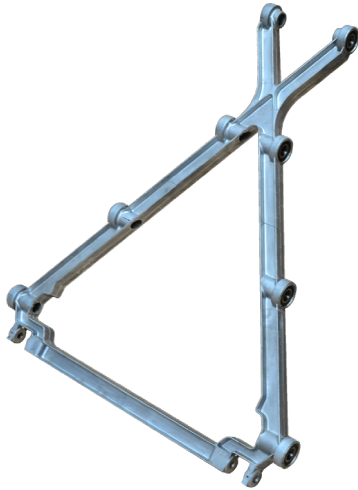
TABLE ASSEMBLY

Pinspotter Parts for AMF Equipment

000-021-645	Lever Asm Switch - Sweep & Table	070-002-816	Cam Follower - Table
000-022-737	Rod End LH 1/4-28 UNF - Table	070-007-303	Spacer, Front End
000-022-738	Rod End RH 1/4-28 UNF - Table	070-007-616	Pivot Pin 5/16 Respot Lever - Table
000-024-657	Spring Cam Lever - Table Drive & Sweep Cam	070-007-622	Lever Respot Asm - Table
000-026-042	Micro Switch	070-007-623	Lever, Respot Asm
070-001-591	Pin	070-007-752	Spacer - Table
070-001-804	Pivot Weldment Respot - Table	090-002-028	Pin, Spring Roller
070-001-807	Spring Respot Finger - Table	090-005-264	End Fitting - RH
070-001-871	Hex Head Screw Cam Link - Table	090-005-265	End Fitting - LH
070-002-577	Stud Spring Yoke Asm - Table	090-005-503	Link Connector
070-002-579	Lever Asm Finger - Table	090-005-504	Respot Pivot
070-002-583	Link Asm Actuating - Table	090-005-571	Link, Pins 8, 9, 10
070-002-585	Shaft Lever Asm - Table	090-005-600	Artuator Lever Weldment
070-002-590	Finger Link - Table	730-027-019	Stud, Ball Head
070-002-592	Pin Finger -Table	807-357-060	Grub Screw 5/16-18 x 3/8 - Hardware
070-002-594	Tie Rod Asm -Table	809-865-245	Hex Head Cap Screw
070-002-596	Spring Yoke Asm - Table	809-869-325	Hex Head Cap Screw
070-002-630SL	Flange Bearing .252 x .315 x .218 	835-549-002	Nut, Hex Jam 1/4-20
070-002-652	Bearing Sleeve .252 x .315 x .5 - Table Drive	835-570-002	Nut Hex Jam
070-002-671	Link, Respot Connecting	835-670-002	Nut Hex Jam
070-002-680	Lever Respot Asm - Table	838-369-002	Lock Nut
070-002-681	Pivot Pin 1/4" Respot Lever - Table	839-665-002	Nut Flex Lock
070-002-701	Pin Yoke Legs - Yoke & Spotting Cup	843-127-002	Nut Keps
070-002-702	Stop - Table	844-049-002	P-Nut 1/4-20
070-002-715	Bearing Sleeve .502 x .689 x 1.5 - Table	879-849-487	Eyebolt
070-002-732	Spring - Table	945-867-242	Washer 10m
070-002-733	Screw Cam Link - Table	948-753-102	Washer, 9/32 x 5/8 x 1/16
070-002-734	Bracket Spring Cam Link - Table	948-983-212	Washer
070-002-745SL	Flange Bearing .6265 x .814 x 1/2 - Table 	949-100-002	Washer
070-002-815	Bearing Spacer	963-400-002	X Washer

DB - Satisfaction Guaranteed

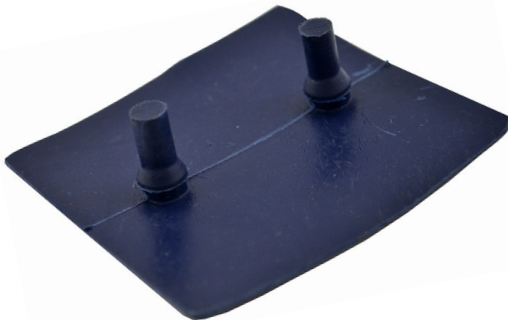
YOKE & BEARING ASSEMBLY



AV 070-002-623
Yoke & Bearing Asm
• True cast with punched bearings



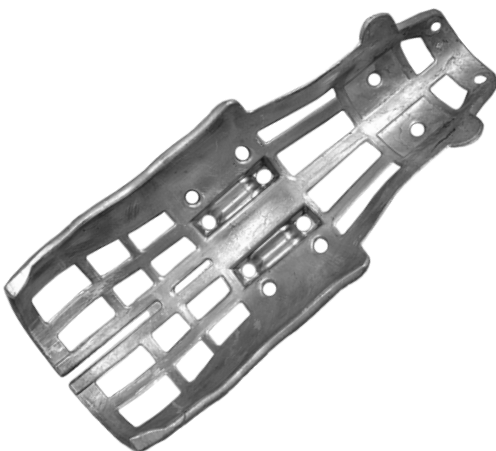
AV 070-002-787XL
U-Bolt Extra Long Giant Spring Conversion Kit
• For increased adjustment



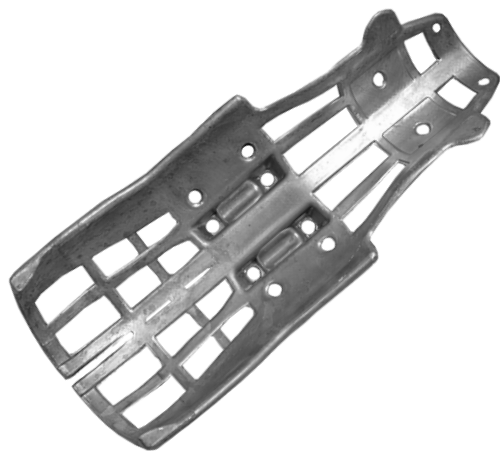
AV 070-002-784
Spotting cup Liner
• Soft, non-stick & hard wearing



AV 610-704-011
Yoke Repair Kit
• Your get out of jail free card



AV 070-002-809P
Premium HP Spotting Cup
• Heavy weight casting



AV 070-002-809
Lightweight Spotting Cup - Standard
• Standard light weight casting

YOKE & BEARING ASSEMBLY

Pinspotter Parts for AMF Equipment



000-023-114SL



000-025-549



070-002-608



070-002-609



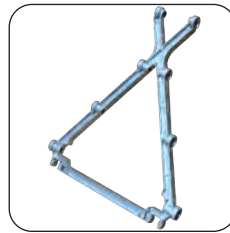
070-002-612



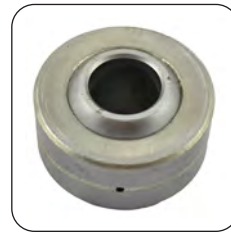
070-002-624



070-002-664



070-002-683



070-002-698



070-002-723



070-002-787XL



070-002-788



070-002-808



190-001-490



701-310-036SL

Pinspotter Parts for AMF Equipment

000-023-114SL Flange Bearing .628 x .8155 x .06 - Sweep, Yoke & Spotting Cup

000-025-549 Collar 7/8 x 11/2 x 9/16 - Yoke & Spotting Cup

070-002-608 Collar Spring - Yoke & Spotting Cup

070-002-609 Pin Lever Rear Yoke Asm - Spotting Cup

070-002-612 Tie Link Asm - Yoke & Spotting Cup ✓

070-002-623 Yoke & Bearing Asm ✓

070-002-624 Arm Actuator - Yoke & Spotting Cup

070-002-664 Leg Asm Front LH - Yoke & Spotting Cup

070-002-683 Yoke Without Bearings

070-002-698 Bearing SR .625 x1.562 x7/8 S6586 - Table Torque & Yoke

070-002-719 Sleeve Spring Yoke - Yoke & Spotting Cup

070-002-723 Pin Actuator Shaft - Yoke & Spotting Cup

070-002-784 Spotting Cup Liner Blue - Spotting Cup ✓

070-002-787XL U-Bolt Extra Long - Spotting Cup ✓

070-002-788 Cap Clamp - Spotting Cup

070-002-808 Spotting Cup Asm With Cap & Hardware

070-002-809P Premium HP Spotting Cup ✓

070-002-809 Lightweight Spotting Cup - Standard ✓

070-002-818 Please refer to: 000-021-442

610-704-011 Yoke Repair Kit - Yoke & Bearing Asm ✓

701-310-036SL Anti-Loss Nylon Thrust Bearing

809-865-245 Hex Head Cap Screw 3/8-16 x 1-1/2 - Hardware

810-249-200 Socket Head Cap Screw 1/4-20 x 1-1/4 - Hardware

810-258-160 Socket Head Cap Screw 5/16-24 x 1 - Hardware

835-565-002 Jam Hex Nut 3/8-16 - Hardware

839-057-002 Please refer to: 844-057-002

839-565-002 Flex Lock Nut 3/8-16 - Hardware

844-049-002 P Type Nyloc Nut 1/4-20 - Hardware

900-205-053 Flange Bearing .315 x.44 x5/16 - Yoke & Spotting Cup & Wireway

900-205-053SL Self-Lube Flange Bearing - Yoke & Bearing

919-000-700 Internal Retaining Ring #5000-156 - Hardware

948-761-112 Washer Wrought 5/16 - Hardware

DB - Developed in the United Kingdom

TABLE TORQUE TUBE ASSEMBLY



610-704-103
Spring Roller Repair Kit
• Be prepared if your stud breaks



612-070-012
Counter Balance Spring Table Fix Kit
• If your hook breaks off the table



090-005-015
Torque Tube Bearing
• New smaller hole less slack

Pinspotter Parts for AMF Equipment



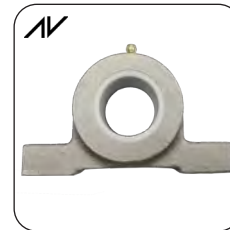
000-022-782



070-001-668SL



070-002-698



000-022-811



070-007-303



070-008-182



090-004-007

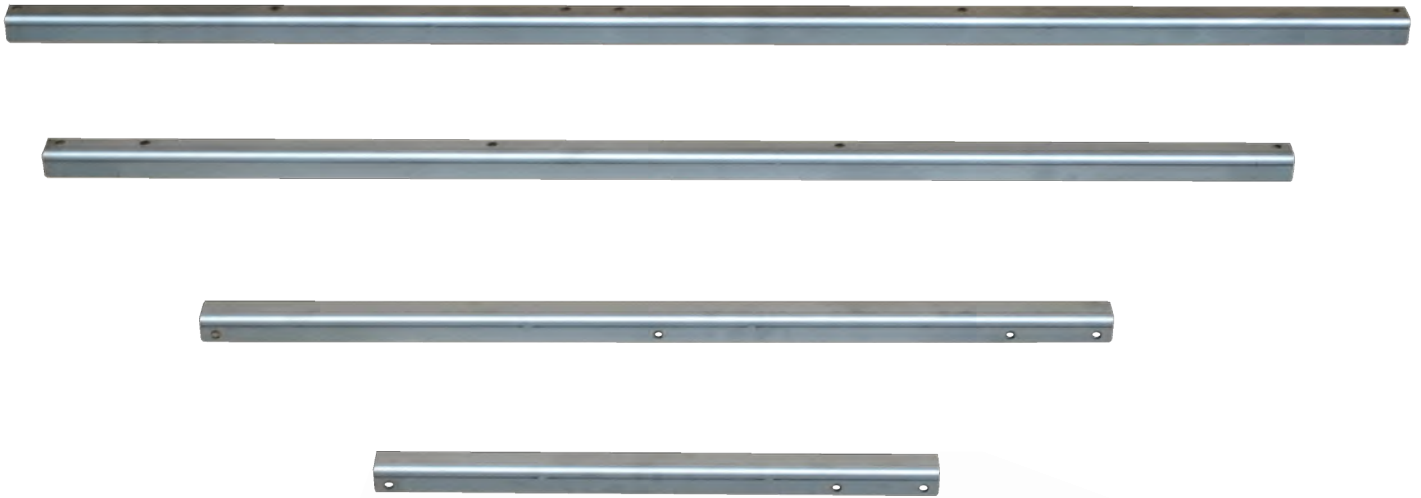






090-005-662

Pinspotter Parts for AMF Equipment

000-022-782	Spring Counter Balance	070-008-182	Block Bearing - Torque Tube
000-022-811	Dura Pillow Block	090-004-007	Torque Tube Hanger
070-001-668SL	Self-Lube Spring Roller - Table	090-005-015	Torque Tube Bearing
070-002-698	Bearing SR.625 x1.562 x7/8 S6586 - Table Torque & Yoke	090-005-662	Counter Balance Spring
070-007-302	Spacer Front End-Torque Tube	610-704-103	Kit-Spring Roller Pin Repair Kit - Table
070-007-303	Spacer Front End - Spot & Respot	612-070-012	Counter Balance Spring Eye Repair Kit - Table

TABLE WIREWAY ASSEMBLY



-  070-006-669 Steel Table Link 1, 2, 4, 7 - Wireway
-  070-002-768 Steel Table Link 3, 5, 8 - Wireway
-  070-002-769 Steel Table Link 6, 9 - Wireway
-  070-002-770 Steel Table Link 10 - Wireway

- Replaces old fashioned wire ways



-  070-002-671 Solid Link Respot Connector
- Solid Stainless replaces fabricated tin

TABLE WIREWAY ASSEMBLY

Pinspotter Parts for AMF Equipment



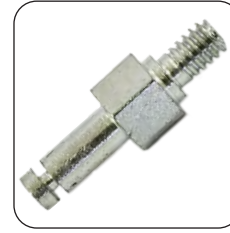
000-026-865



070-002-652



070-002-678



070-002-774



070-002-814



070-002-815



070-007-623



730-027-019



900-205-053SL

Pinspotter Parts for AMF Equipment

000-026-865	Thrust washer 1/4 x 7/8 - Dist & Ratchet
070-002-652	Bearing Sleeve .252 x315 x.5 - Table Drive
070-002-671	Solid Link Respot Connector - Table
070-002-678	Lever Respot Asm - Wireway
070-002-768	Link Table Steel - Wireway
070-002-769	Link Table Steel - Wireway
070-002-770	Link Table Steel - Wireway
070-002-774	Pin - Wireway
070-002-814	Link Asm - Wireway

070-002-815	Bearing .252x.318x.307 LG - Wireway
070-006-669	Link Steel - Wireway
070-007-623	Lever Respot Asm - Wireway
730-027-019	Stud Ball Head 1/4 - 20 - Wireway
844-049-002	P Type Nyloc Nut 1/4-20 - Hardware
900-205-053	Flange Bearing .315 x.44 x5/16 - Yoke & Spotting Cup & Wireway
900-205-053SL	Self- Lube Flange Bearing
963-200-002	X - Washer 1/8 9000-8 - Hardware

DB - Satisfaction Guaranteed

RESPOT CELL ASSEMBLY

8270 / Early 8290



070-002-570



070-002-630SL



070-002-632



070-002-645



070-002-647



070-002-649



070-002-650



070-002-652



070-002-653SL



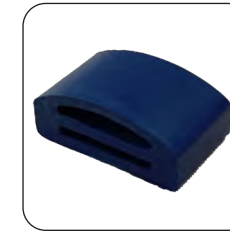
070-002-654



070-002-685



070-002-750



070-002-752



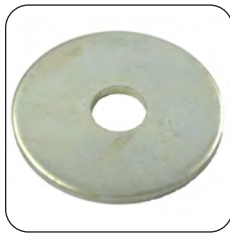
070-002-774



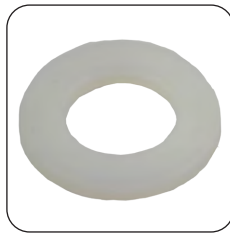
070-002-792



070-006-519



070-007-192



070-007-193



070-007-194



070-007-195



070-007-196



070-007-197



070-007-200



070-007-617



070-007-620

DB - Better Value Parts

RESPOT CELL ASSEMBLY

8270 / Early 8290



090-004-123

8270 / Early 8290

070-002-570	Insert Yoke Arm - Respot Cell	070-007-193	Nylon Spacer - Respot Cell
070-002-630SL	Flange Bearing .252 x.315 x.218 - Respot Cell 	070-007-194	Stud Long - Respot Cell
070-002-632	Adjusting Screw - Respot Cell	070-007-195	Stud Short - Respot Cell
070-002-645	Shaft Lever Asm - Respot Cell	070-007-196	Flange Bearing .252x.485x.560 - Respot Cell
070-002-647	Universal Respot Yoke Arm Asm	070-007-197	Plastic Insert Round Hole - Respot Cell
070-002-649	Spring Tension - Respot Cell	070-007-199	Respot Cell Asm #7 - Respot Cell
070-002-650	Stud - Respot	070-007-200	Respot Cell Asm - Respot Cell
070-002-652	Bearing Sleeve .252x315 x.5 - Table Drive	070-007-617	Pivot Stud 5/16 - Respot Cell
070-002-653SL	Flange Bearing .252 x.315 x.38 - Table drive 	070-007-618	Please refer to: 070007618M
070-002-654	Pivot Shaft 1/4 - Respot Cell	070-002-647	Respot Yoke Asm - Respot Cell
070-002-685	Shaft Pivot #7 - Respot Cell	070-007-620	Lever Asm #7 Cell - Respot Cell
070-002-750	Screw Flat Head - Respot Cell	090-004-123	Respot Finger Asm - Respot Cell
070-002-752	Bumper Pillow Extension - Respot Cell	808-640-121	Cap Head Patched #10-32 x 3/4 - Hardware
070-002-774	Pin	808-640-141	Cap Head Patched #10-32 x 7/8 - Hardware
070-002-792	Frame Respot Weld - Respot Cell	844-049-002	P Type Nyloc Nut 1/4-20 - Hardware
070-006-519	Respot Gauge - Tool	913-437-100	Spring Pin .187 x 5/8 - Hardware
070-006-673	Please refer to: 070-007-618	963-100-002	X - Washer 3/32 9000-6 - Hardware
070-006-674	Please refer to: 070-007-200	963-200-002	X - Washer 1/8 9000-8 - Hardware
070-007-192	Washer - Respot Cell & PBL	963-400-002	X - Washer 3/16 9000-12 - Hardware

RESPOT CELL ASSEMBLY

8290



070-002-645



070-002-653SL



070-002-750



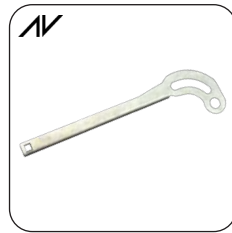
070-007-192



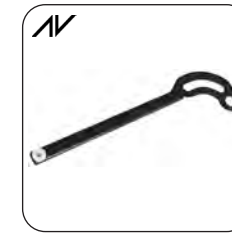
070-007-193



070-007-195



090-004-119



090-004-123



090-005-504



090-005-522



090-005-571



090-005-617



730-027-019



792-506-033

8290

070-002-630	Flange Bearing .252 x.315 x.218 - Respot Cell	090-005-571	Pin 8-9-10 Link Kit
070-002-645	Shaft Lever Asm - Respot Cell	090-005-617	Ski Finger Insert - Respot Cell
070-002-653SL	Self-Lube Bearing - Respot Cell	090-005-632	Finger Pivot Wing - Respot Cell
070-002-750	Screw Flat Head - Respot Cell	730-027-019	Stud Ball Head 1/4 - 20 - Wireway
070-007-192	Washer - Respot Cell & PBL	792-506-033	Finger Insert Square Hole - Respot Cell
070-007-193	Nylon Spacer - Respot Cell	807-650-050	Grub Screw 1/4-28 x 5/16 Set Screw - Hardware
070-007-195	Stud Short - Respot Cell	808-549-080	Button Head Cap Screw 1/4-20 x 1/2 - Hardware
090-004-119	Finger With Square Hole - Respot Cell	809-149-100	Hex Head Cap Screw 1/4-20 x 5/8 With Patch - Hardware
090-004-123	Respote Finger Asm - Respot Cell	844-049-002	P Type Nyloc Nut 1/4-20 - Hardware
090-005-504	Respote Pivot - Respot Cell	963-200-002	X - Washer 1/8 9000-8 - Hardware
090-005-522	Bushing Respot Finger - Respot Cell		

DB - Developed in the United Kingdom

DISTRIBUTOR ASSEMBLY



AV 070-006-757RH
Distributor Belt Red Hot
• Thick but pliable high grip with lacing



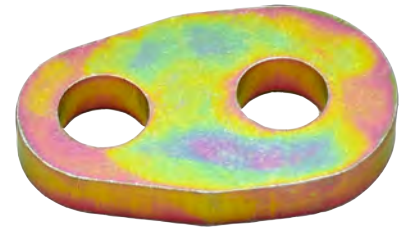
AV 070-006-757GT
Distributor Belt Grip-Trac
• Liquorice like poly V parallel lined



AV 070-006-034
Super Spring Linear
• 50% stronger than the original!



AV 070-006-042
Distributor Runner Belt Reart
• Adjustable Belt Runner



AV 070-006-068
Support Spring-Dist
• Extra thick material



AV 070-006-103
Support Guide LH - Dist
• Extra material at stress point



AV 070-006-118
Eccentric Bearing Grooved
• Distinctive blue non wobble moulded bearing



AV 070-011-910
Orientor Pan Wipe
• Improved material increased life

DISTRIBUTOR ASSEMBLY



AV 610-704-006D
Duraclutch Asm

- The original brake clutch
- Positive drive action
- Developed in the UK



610-704-004



610-704-007



610-704-008



610-704-009



610-704-013



610-704-016



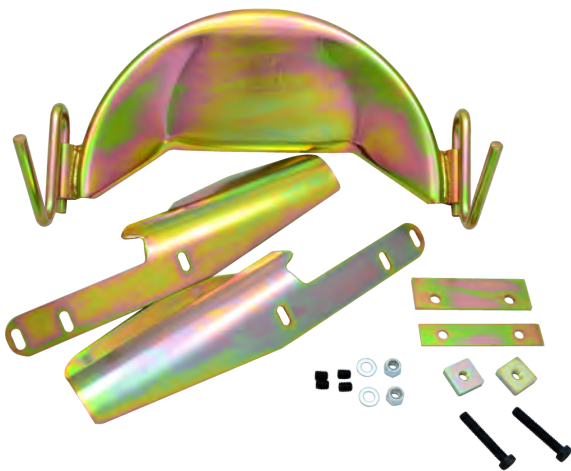
610-704-017



610-704-020

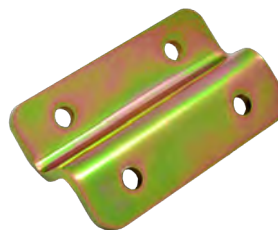


610-704-115



AV 022-610-004
Fixed Orientor Pan Kit - One Pinspotter

- Total control of pin orientation



022-090-018
Fixed Orientor Pan 8290 Adapter Kit



AV 610-704-006R
Roller Clutch Plate Kit

DISTRIBUTOR ASSEMBLY

Pinspotter Parts for AMF Equipment



000-006-001



000-022-173



000-024-679



000-026-031



000-026-081



000-026-251



000-026-865



022-704-006SL



070-001-857



070-006-004



070-006-011



070-006-014



070-006-015



070-006-016



070-006-019



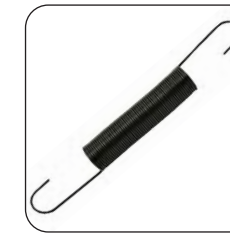
070-006-022



070-006-028



070-006-029



070-006-034



070-006-035



070-006-036



070-006-037



070-006-049



070-006-051



070-006-061

DB - Satisfaction Guaranteed

DISTRIBUTOR ASSEMBLY

Pinspotter Parts for AMF Equipment



070-006-066



070-006-067



070-006-069



070-006-071



070-006-073



070-006-075



070-006-076



070-006-077



070-006-084



070-006-087



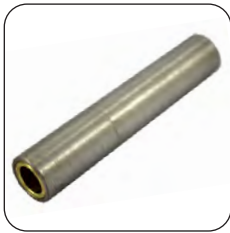
070-006-104



070-006-105



070-006-106



070-006-107



070-006-108



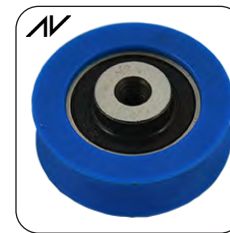
070-006-109



070-006-111



070-006-116



070-006-117



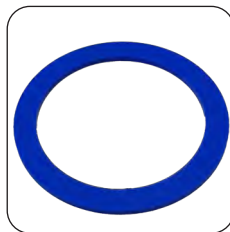
070-006-121



070-006-124



070-006-125



070-006-126



070-006-128



070-006-130

DB - Better Value Parts

DISTRIBUTOR ASSEMBLY

Pinspotter Parts for AMF Equipment



070-006-137



070-006-139



070-006-140



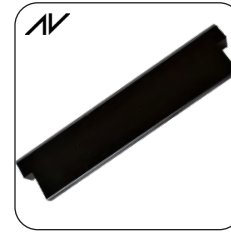
070-006-142



070-006-144



070-006-149



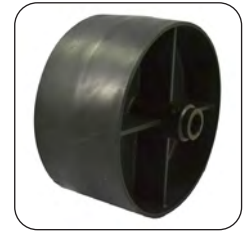
070-006-201



070-006-659



070-006-661



070-006-666



070-006-676



070-006-679SL



070-006-685



070-006-691



070-007-376



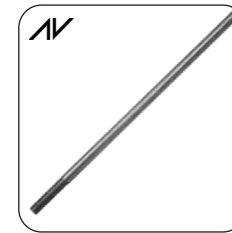
070-007-651



070-007-586B



070-009-868



070-011-170



070-011-171



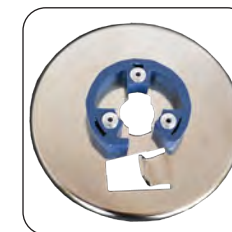
070-011-172



070-011-173



610-704-005



610-704-006



612-700-001

DB - Designed by Technicians for Technicians

DISTRIBUTOR ASSEMBLY

Pinspotter Parts for AMF Equipment



701-849-124



900-206-091



900-206-091SL

Pinspotter Parts for AMF Equipment

000-006-001	Index cam follower kit - Dist	070-006-067	Rod Safety Link - Dist
000-022-173	Nut Special Roller - Dist & Kicker	070-006-068	Support Spring-Dist
000-024-679	Ball bearing .625 x 1.375 - Dist & Kicker	070-006-069	Nut Special Drive Arm - Dist
000-026-031	Belt Tightner Spring - Dist & LBS	070-006-071	Cam Follower - Dist
000-026-081	Spring Post Sleeve - Dist	070-006-073	Thrust Washer - Dist
000-026-251	Roller Screw & Star Washer - Dist & Bin	070-006-075	Needle Bearing 1" Closed End - Dist
000-026-865	Thrust washer 1/4 x 7/8 - Dist & Ratchet	070-006-076	Needle Bearing 1" Open End - Dist
022-090-018	Fixed Orientor Pan 8290 Adapter Kit	070-006-077	Drive Shaft - Dist
022-610-004	Fixed Orientor Pan Kit - One Pinspotter	070-006-084	Bracket Trip Stop Support- Dist
022-704-006SL	S-Lube Clutch Roller	070-006-087	Sleeve Pivot Trip - Dist
070-001-857	Nylon Roller - Dist & Table Drive	070-006-103	Support Guide LH - Dist
070-006-004	Distributor Tube - Dist	070-006-104	Support Guide RH - Dist
070-060-011	Pulley Asm - Dist	070-006-105	Tube Asm Belt Tightener - Dist
070-006-014	Shaft Trip Arm Pivot - Dist	070-006-106	Bracket Tracking - Dist
070-006-015	Trip Arm Asm RH - Dist	070-006-107	Tube Belt Tightener - Dist
070-006-016	Trip Arm Asm LH - Dist	070-006-108	Spacer Roller Asm - Dist
070-006-019	Spring Collar Carriage Asm - Dist	070-006-109	Link Tension Roller Asm - Dist
070-006-022	Tube Asm Middle - Dist	070-006-111	Sleeve Spring Post- Dist
070-006-028	Rocker Arm Trip Kit- Dist	070-006-116	Stud Clamp Carriage - Dist & Shuttle
070-006-029	Link Connecting - Dist	070-006-117	Concentric Bearing Grooved Blue - Dist
070-006-034	Super Spring Linear - Dist	070-006-118	Eccentric Bearing Grooved Blue - Dist
070-006-034	Original Spring Linear - Dist	070-006-121	Washer Clutch - Dist
070-006-035	Spring Torsion Trip Arm - Dist	070-006-124	Clutch Nut - Dist
070-006-036	Belt Lacing Uni-Bar Strip (4 belts) - Dist	070-006-125	Worm Adjusting - Dist
070-006-037	Lacing Pin Strip (4 belts) - Dist	070-006-126	Friction Disc - Dist
070-006-042	Adjustable Belt Runner - Dist	070-006-128	Spring Asm - Dist
070-006-049	Shaft Arm - Dist	070-006-130	Clutch Drive Plate - Dist
070-006-051	Distributor Arm - Dist	070-006-137	Belt Guard Carriage Asm- Dist
070-006-061	Shaft Cam Support- Dist	070-006-139	Spacer Inner-Dist
070-006-066	Rod End Female - Dist	070-006-140	Spacer Outer- Dist

DB - Developed in the United Kingdom

DISTRIBUTOR ASSEMBLY

Pinspotter Parts for AMF Equipment

070-006-142	Bumper - Multi Position	701-849-124	Metal Concentric Roller 1/4-20 - Dist
070-006-144	Orienter Pan Zinc Plated - Dist	809-849-100	Hex Head Cap Screw 1/4-20 x 5/8 - Hardware
070-006-149	Index Cam - Dist	809-849-125	Hex Head Cap Screw 1/4-20 x 3/4 - Hardware
070-006-201	Distributor Belt Riser - Dist 	809-849-205	Hex Head Cap Screw 1/4-20 x 1-1/4 - Hardware
070-006-659	Shaft Trip Rocker Asm - Dist	809-849-885	Hex Head Cap Screw 1/4-20 x 5-1/2 - Hardware
070-006-661	Trip Rocker Arm - Dist	809-857-080	Hex Head Cap Screw (Grd 8) 5/16-18 x 1/2 - Hardware
070-006-666	Pulley Dist Belt Drive - Dist	810-239-160	Socket Head Cap Screw #10-24 x 1 - Hardware
070-006-668	Please refer to: 070009868	810-239-240	Socket Head Cap Screw #10-24 x 1-1/2 - Hardware
070-006-676	Sleeve Dist Drive - Dist	813-540-082	Pan Head Screw #10-32 x 1/2 CD - Hardware
070-006-679SL	Bearing Sleeve .752 x.877 x1.66 - Dist	831-566-002	Hex Nut 3/8-24 - Hardware
070-006-685	Pivot Trip Asm - Dist	840-039-002	Flex Lock Thin Nut #10-24 - Hardware
070-006-691	Stop Blades Trip Arm - Dist	840-040-002	Flex Lock Thin Nut #10-32 - Hardware
070-006-757GT	Distributor Belt Grip-Trac Asm - Dist 	844-049-002	P Type Nyloc Nut 1/4-20 - Hardware
070-006-757RH	Distributor Belt Red Hot Asm - Dist 	844-050-002	P Type Nyloc Nut 1/4-28 - Hardware
070-007-376	Thrust Washer - Dist	844-073-002	P Type Nyloc Nut 1/2-13 - Hardware
070-007-586B	Sidewinder Plastic Universal Joint - Dist	900-106-091	Sleeve Bearing .378 x.503 x1/2 - Dist
070-007-651	Nylon Washer - Dist	900-206-091SL	Flange Bearing .378 x.503 x 9/16 - Dist
070-009-868	Trip Rod Slotted Asm - Dist	900-206-081	S-Lube Flange Bearing - Dist
070-011-170	Trip Rod Solid - Dist 	907-000-100	Key #403 HyPro - Dist
070-011-171	Cable Asm - Dist	913-415-090	Spring Pin .094 x 9/16 - Hardware
070-011-172	Ball Joint Stud 7/16 - Dist	913-423-160	Spring Pin .125 x 1 - Hardware
070-011-173	Ball Joint Stud 9/16 - Dist	913-437-120	Spring Pin .187 x 3/4 - Hardware
070-011-910	Orienter Pan Wipe - Dist 	913-437-140	Spring Pin .187 x 7/8 - Hardware
610-704-004	Rue Clip - Duraclutch	913-464-280	Spring Pin .375 x 1 3/4 - Hardware
610-704-005	Pinion & Sleeve Asm - Dist	914-037-206	Seloc Pin 3/16 x 1 1/4 - Hardware
610-704-006	Kit Clutch Plate Chrome Asm	914-037-206R	R Clip Distributor Drive - Dist Drive 
610-704-006R	Roller Clutch Plate Kit - Dis 	919-000-600	Internal Retaining Ring #5000-137 - Hardware
610-704-006D	Duraclutch Asm - Dist 	919-004-200	Internal Retaining Ring #5008-212 - Hardware
610-704-007	Leather Lining - Duraclutch	919-005-000	External Retaining Ring #5100-25 - Hardware
610-704-008	Spring - Duraclutch	919-005-300	External Retaining Ring #5100-37 - Hardware
610-704-009	Arm Kit - Duraclutch	919-005-600	External Retaining Ring #5100-62 - Hardware
610-704-013	Nylon Washer - Duraclutch	919-006-800	Retaining Ring 5115-37 - Hardware
610-704-016	Grub Screw	948-745-082	Please refer to: 948-753-102
610-704-017	Clutch Lining (glue needed)	948-761-112	Washer Wrought 5/16 - Hardware
610-704-020	Brake Hub/Boss	948-975-172	Washer 1/2 - Hardware
610-704-115	Plastic Clutch Pinion Sleeve	957-100-002	Lock Washer #10 External Tooth - Hardware
612-700-001	Original Style Clutch Kit Asm - Dist		

DB - Distributed Worldwide

DISTRIBUTOR DRIVE ASSEMBLY 70'S



000-024-893
Complete Asm LH Narrow Long



070-006-102
Complete Asm RH Narrow Short

8270



000-022-369



000-022-717



000-024-892



000-026-461



000-027-390



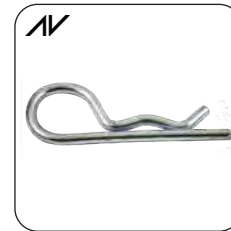
000-029-073



070-006-101



070-007-586B



914-037-206R

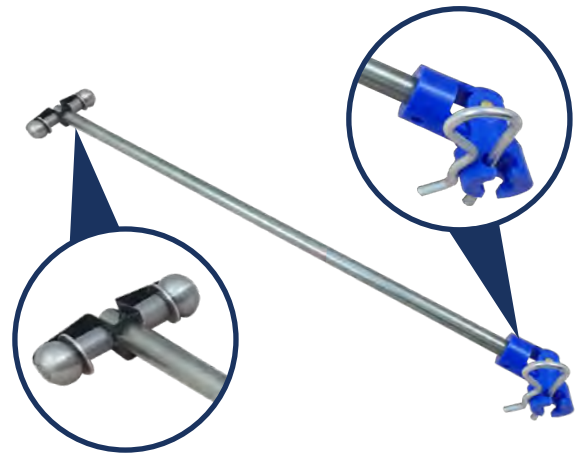
8270

000-022-369	Long Drive Shaft LH - Dist Drive	070-006-101	Short Drive Shaft RH - Dist Drive
000-022-717	Dowel Pin Narrow - Dist Drive	070-006-102	Shaft Drive Complete Asm RH Narrow Short - Dist Drive
000-024-892	Retainer Uni-Ball Narrow - Dist Drive	070-007-586B	Sidewinder Plastic Universal Joint - Dist
000-024-893	Drive Shaft Complete Asm LH Narrow Long - Dist Drive	807-358-060	Grub Screw 5/16-24 x 3/8 - Hardware
000-026-461	Uniball Bearing .25x.687 - Dist Drive	913-423-120	Spring Pin .125 x 3/4 - Hardware
000-027-390	Distributor Drive Housing Narrow - Dist Drive	913-437-160	Spring Pin .187 x 1" - Hardware
000-029-073	Washer Uni-Ball - Dist Drive	914-037-206R	R Clip Distributor Drive - Dist Drive

DISTRIBUTOR DRIVE ASSEMBLY 90'S



090-006-102
Complete Asm Wide RH Short
• Easy fit and go



090-006-103
Complete Asm Wide LH Long
• Easy fit and go

8290



000-022-369



000-026-461



000-029-073



070-006-101



070-007-586B



090-001-130



090-002-034



722-501-070



908-048-480

8290

000-022-369 Long Drive Shaft LH - Dist Drive

000-026-461 Uniball Bearing .25x .687 - Dist Drive

000-029-073 Washer Uni-Ball - Dist Drive

070-006-101 Short Drive Shaft RH - Dist Drive

070-007-586B Sidewinder Plastic Universal Joint - Dist Drive

090-001-130 Drive Housing Wide - Dist Drive

090-002-017 Please refer to: 000-022-369

090-002-018 Please refer to: 000-006-101

090-002-019 Please refer to: 000-026-461

090-002-034 Retainer Wide - Dist Drive

090-006-102 Drive Shaft Complete Asm Wide RH Short - Dist Drive

090-006-103 Drive Shaft Complete Asm Wide LH Long - Dist Drive

722-501-070 Wide Spacer Franklin - Dist Drive

908-048-480 Dowel Pin 1/4 x 3 Wide - Dist Drive

913-423-120 Spring Pin .125 x 3/4 - Hardware

913-437-160 Spring Pin .187 x 1" - Hardware

914-037-206R R Clip Distributor Drive - Dist Drive

DB - Satisfaction Guaranteed

BALL LIFT (PBL)

Pinspotter Parts for AMF Equipment



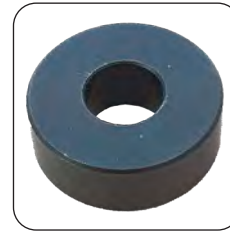
000-022-099



088-001-233



000-024-608



000-024-647



000-024-648



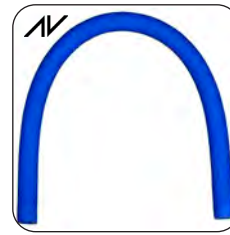
000-024-651



000-024-659



000-024-661



000-024-663RC



000-024-673



000-024-716



000-024-720



000-024-811



000-027-996



000-027-998



000-028-057



000-028-737



000-028-771



000-029-600



000-029-613



000-029-660



000-029-661



022-006-001SL



070-001-995



070-006-325

BALL LIFT (PBL)

Pinspotter Parts for AMF Equipment



070-006-329



070-006-699



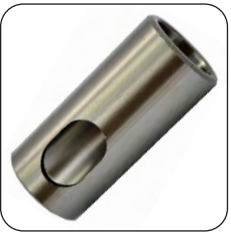
070-006-746



070-006-747



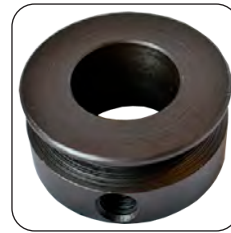
070-006-748



070-006-749



070-007-291



070-008-210



070-008-211



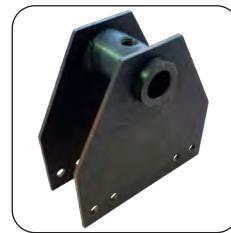
070-008-212



070-008-217



070-008-218



070-011-002



070-011-040



070-011-148



070-011-289



070-011-795SS



070-011-796SS



070-011-797



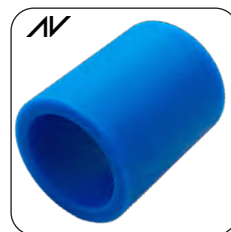
090-004-520



900-110-121SL



900-112-161SL



900-112-203SL



900-206-081SL



900-212-161SL

DB - High Performance Bowling Parts

BALL LIFT (PBL)

Kickback



000-024-610



000-024-641



070-011-007



070-011-007HWK

Pinspotter Parts for AMF Equipment

000-022-099	Belt V Pitch 112 - Carpet Drive Westinghouse - PBL & Kicker	070-006-329	Shaft Ball Lift 11 to 12 5/8" - PBL
000-024-603T	PBL Compression Tool - PBL & Tool	070-006-699	Bearing With Snap Ring - PBL & Kicker
000-024-608	Retainer Upper - PBL	070-006-746	Shaft Lower - PBL & Kicker
000-024-610	Stud Clamp - PBL & Kicker	070-006-747	Upper Shaft - PBL & Kicker
000-024-641	Stop Bumper - PBL	070-006-748	Spacer - PBL & Kicker
000-024-647	Roller - PBL	070-006-749	Clutch Race - PBL & Kicker
000-024-648	Pivot Pin - PBL	070-007-192	Washer - Respot Cell & PBL
000-024-651	Lower Link Asm - PBL	070-007-291	Clutch Bearing NSK .9995 x1.312 x1 03-075 - PBL & Powerlift
000-024-659	Yoke Lower With Bearings - PBL	070-008-210	Sheave Paddle Drive - PBL
000-024-661	Super Pulley - PBL	070-008-211	Sheave - PBL
000-024-663	Please refer to: 00024663RC	070-008-212	Spacer-Ratchet & PBL
000-024-663RC	One Piece Blue Rail - Ball Track & PBL	070-008-217	Spacer - PBL
000-024-673	Spring - Dist - PBL & Kicker	070-008-218	Spacer- PBL
000-024-716	Spring Bracket - PBL	070-011-002	Lower Support - PBL
000-024-720	Link Asm Upper - PBL	070-011-007	Duraring Heavy Duty Ball Door Pair - Kickback
000-024-811	Pulley Solid Asm RH - PBL	070-011-007HWK	Dura Ring Ball Door Hardware Kit
000-024-812	Pulley Solid Asm LH - PBL	070-011-040	Nylon Roller - Ratchet, LBS & PBL
000-027-996	Cushion Rubber - PBL & Kicker	070-011-148	V-Belt Rudder Primary - PBL & Belt Tensioner
000-027-998	Retainer - PBL & Kicker	070-011-289	Bracket For Shock Absorber - PBL
000-028-057	Retainer Cushion Guide - PBL & Kicker	070-011-440	Please refer to: 000-024-663RC
000-028-737	Shaft Pivot Profile - PBL	070-011-795SS	Silver Steel D Shaft Upper - PBL
000-028-771	Sheave - PBL	070-011-796SS	Silver Steel D Shaft Lower - PBL
000-029-600	Belt-V 33 1/2 Ball Rudder, Secondary - PBL	070-011-797	Ball Bearing D Bore Metal Caged - PBL
000-029-613	Rail Ball Elevator - PBL	088-001-233	Premium Grey PBL Belt - PBL
000-029-660	Shaft - PBL & Kicker	090-002-450	Please refer to: 088-001-233
000-029-661	Shock Absorber - PBL & Kicker	090-004-520	V-Belt 114 Carpet Drive Franklin - PBL
022-006-001SL	S-Lube Kit - PBL	806-265-160	Square Head Cap Screw 3/8-16 x 1 - PBL & Rear Roller
070-001-995	Upper Yoke With Bearings - PBL	807-265-060	Grub Screw 3/8-16 x 3/8 - Hardware
070-006-325	Split Shaft Long - PBL & Kicker	807-265-080	Grub Screw 3/8-16 x 1/2 - Hardware

DB - Satisfaction Guaranteed

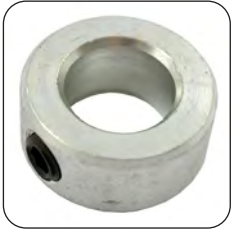
BALL LIFT (PBL)

Pinspotter Parts for AMF Equipment

808-849-565	Flat Head Socket Cap Screw 1/4-20 x 3 1/2 - Hardware	900-112-203SL	S-Lube Sleeve Bearing - PBL 
809-849-365	Hex Head Cap Screw 1/4-20 x 2-1/4 - Hardware	900-206-081	Flange Bearing .378 x.688 x1/2 - PBL
809-865-165	Hex Head Cap Screw 3/8-16 x 1 - Hardware	900-206-081SL	S-Lube Flange Bearing - PBL 
809-865-445	Hex Head Cap Screw 3/8-16 x2-3/4 - Hardware	900-208-161	Refer to 900-206-081S
831-566-002	Hex Nut 3/8-24 - Hardware	900-212-161SL	S-Lube Flange Bearing - PBL 
839-665-002	Flex Lock Nut 3/8-16 - Hardware	919-005-200	External Retaining Ring #5100-31 - Hardware
856-070-002	Flanged Lock Nut 7/16-20 - Hardware	919-005-600	External Retaining Ring #5100-62 - Hardware
900-110-121	Sleeve Bearing .628 x 3/4 LG - PLB	919-005-800	External Retaining Ring #5100-75 - Hardware
900-110-121SL	S-Lube Sleeve Bearing - PBL 	948-761-112	Washer Wrought 5/16 - Hardware
900-112-161	Sleeve Bearing .753 x1- Kicker	948-983-212	Washer 5/8 - Hardware
900-112-161SL	S-Lube Sleeve Bearing - PBL 	951-164-002	Spring Lock Washer 3/8 - Hardware
900-112-203	Refer to: 900-112-203SL S-Lube Sleeve Bearing - PBL AV		

BALL TENSIONER & BELT TIGHTENER

Pinspotter Parts for AMF Equipment



000-021-423



000-026-031



000-029-603



000-029-605



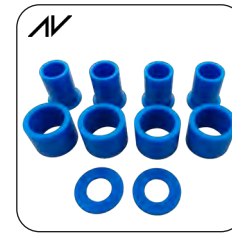
000-029-606



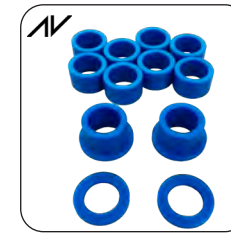
000-029-659



022-006-002SL



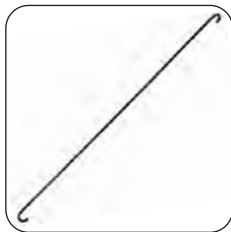
022-006-003SL



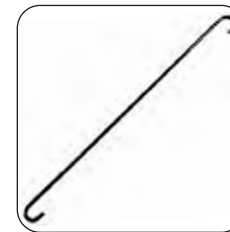
022-006-004SL



022-006-005SL



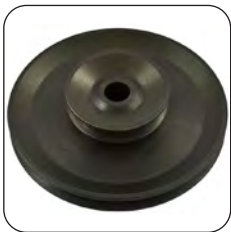
070-011-034



070-011-106



070-011-109



070-011-131



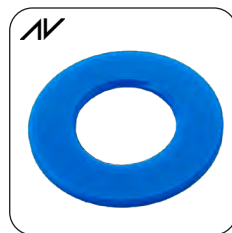
070-011-132



070-011-133



090-002-014



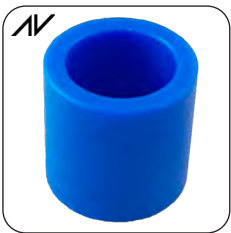
701-316-041SL



701-320-045SL



900-110-081SL



900-110-141SL



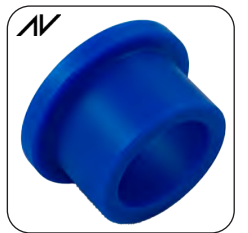
900-112-121SL



900-208-120SL



900-208-161SL



900-210-101SL

DB - Designed by Technicians for Technicians

BALL TENSIONER & BELT TIGHTENER

Pinspotter Parts for AMF Equipment

000-021-423	Collar & Screw 5/8 x 1 1/8 x 1/2 - Shuttle & Belt Tensioner	070-011-109	Spring Clip - Belt Tensioner
000-026-031	Belt Tightner Spring - Dist & LBS	070-011-131	Pulley Weldment - Belt Tensioner & PBL
000-029-603	Shaft Ball Lift Support - Belt Tensioner & Kicker	070-011-132	Belt Tensioner Asm Complete
000-029-605	Pivot Shaft - Belt Tensioner & Kicker	070-011-133	Shaft - Belt Tensioner
000-029-606	Pivot Shaft Short PBL - Belt Tensioner & Kicker	090-002-014	Idler Shaft ASM - Belt Tensioner
000-029-659	Hanger Arm Asm - Belt Tensioner & Kicker	701-316-041SL	S-Lube Thrust Washer - New Style Belt Tightener 
022-006-002SL	S-Lube Kit - Old Style Belt Tightener 	701-320-045SL	Description 
022-006-003SL	S-Lube Kit - New Style Belt Tightener 	900-110-081SL	Self-Lube Bearing Sleeve - Dist 
022-006-004SL	S-Lube Kit - Old Style Belt Tensioner Assembly 	900-112-121SL	S-Lube Sleeve Bearing - New Style Belt Tightener 
022-006-005SL	S-Lube Kit - New Style Belt Tensioner Assembly 	900-110-141SL	Sleeve Bearing .628 x.878 x7/8 - Kicker 
070-002-004	Arm Asm RH Belt Tightener -Motor Bracket	900-208-120SL	S-Lube Flange Bearing - New Style Belt Tensioner 
070-002-216	Arm Asm LH Belt Tightener -Motor Bracket	900-208-161SL	Flange Bearing - LBS 
070-011-034	Extension Rod - PBL	900-210-101SL	Flange Bearing .628 x 5/8 - Belt Tensioner 
070-011-106	Spring Extension - Belt Tensioner	919-005-600	External Retaining Ring #5100-62 - Hardware

LIGHT BALL SENSOR



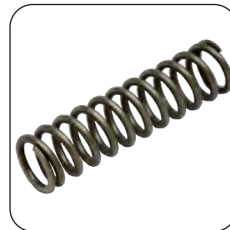
- AV** 070-011-015
 LiteBall Sensor Assembly - LBS
- Less moving parts
 - Easy set up
 - Easy servicing



070-011-001



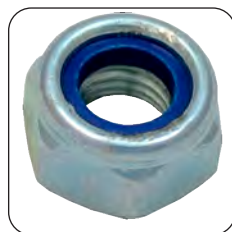
070-011-003



070-011-004



070-011-010



070-011-011



070-011-012



070-011-014

LiteBall Sensor

070-011-001	Right Angle Road End Nut - LiteBall Sensor, LBS
070-011-003	Right Angle Screw Nut - LiteBall Sensor, LBS
070-011-004	Spring Stop Lock Nut - LiteBall Sensor, LBS
070-011-010	Rod End Nut - LiteBall Sensor, LBS

070-011-011	Spring Stop Lock Nut - LiteBall Sensor, LBS
070-011-012	Right Angle Bolt - LiteBall Sensor, LBS
070-011-014	Block - LiteBall Sensor, LBS
070-011-015	LiteBall Sensor Assembly - LBS AV

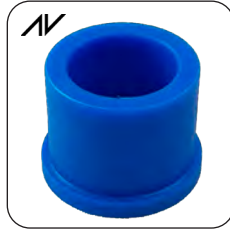
DB - Distributed Worldwide

LIGHT BALL SENSOR

Pinspotter Parts for AMF Equipment



000-021-423



000-021-427SL



000-024-615



000-024-616



000-026-031



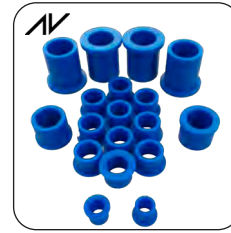
000-026-446



000-027-264



000-029-611



022-006-006SL



070-011-040



070-011-068



070-011-077



070-011-080



070-011-092



070-011-096



070-011-097



070-011-099



070-011-105



070-011-107



070-011-108



070-011-121



070-011-122



070-011-123



070-011-124



070-011-146

DB - Distributed Worldwide

LIGHT BALL SENSOR

Pinspotter Parts for AMF Equipment



070-011-147



070-011-151



070-011-225



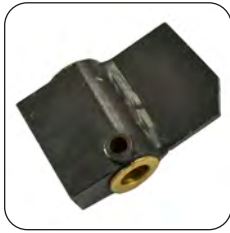
070-011-273



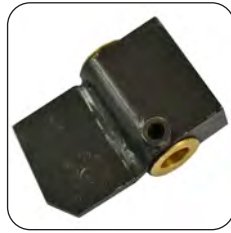
070-011-299



070-011-319



070-011-406



070-011-407



070-011-418



070-011-626



090-005-250



610-704-002



722-971-522



722-985-512



802-865-996



900-205-081SL



900-208-091SL



900-212-201SL



907-000-900

LIGHT BALL SENSOR

Pinspotter Parts for AMF Equipment

000-021-423	Collar & Screw 5/8 x 11/8 x 1/2 - Shuttle, LBS & Belt Tensioner	070-011-407	Rudder Cam Asm LH - LBS
000-021-427SL	S-Lube Flange Bearing - LBS 	070-011-418	Trip Cam - LBS
000-024-615	Shaft Ball Door - LBS	070-011-626	Trip Arm Asm - LBS
000-024-616	Stud Clamp - LBS & Kicker	090-005-250	Rod End 3/8 RH - Track Rail
000-026-031	Belt Tightner Spring - Dist & LBS	610-704-002	Cam Follower Asm - Shuttle & Spot
000-026-446	Rod End RH 3/8 Female - Bin, LBS & Track Rail	722-971-522	Compression Spring 480 x 7/8 - LBS
000-027-264	Spacer - LBS	722-985-512	Compression Spring - LBS
000-029-611	Uni-ball Brg Washer - LBS & Kicker	802-865-996	Hex Head Cap Screw 3/8-16 x 9-1/2 - LBS
022-006-006SL	S-Lube Kit - Light Ball Sensor 	809-849-145	Hex Head Cap Screw 1/4-20 x 7/8 - Hardware
070-006-728	Please refer to: 610-704-002	809-857-165	Hex Head Cap Screw 5/16-18 x 1 - Hardware
070-011-040	Nylon Roller - Ratchet & LBS	809-857-880	Hex Head Cap Screw 5/16-18 x 5-1/2 - Hardware
070-011-068	Link Weld - LBS	809-865-165	Hex Head Cap Screw 3/8-16 x 1 - Hardware
070-011-077	Trip Finger - LBS	809-865-205	Hex Head Cap Screw 3/8-16 x 1-1/4 - Hardware
070-011-080	Rudder Drive Asm-LBS	809-865-405	Hex Head Cap Screw 3/8-16 x 2-1/2 - Hardware
070-011-092	Crank Shaft Weldment - LBS	831-573-002	Hex Nut 1/2-13 - Hardware
070-011-096	Roller- LBS	835-566-002	Jam Hex Nut 3/8-24 - Hardware
070-011-097	Crank Pulley - LBS	838-866-002	P Type Nyloc Nut 3/8-24 - Hardware
070-011-099	Cam - LBS	839-565-002	Flex Lock Nut 3/8-16 - Hardware
070-011-105	Roller Asm - LBS	840-065-002	Flex Lock Thin Nut 3/8-16 - Hardware
070-011-107	Trip Arm - LBS	844-049-002	P Type Nyloc Nut 1/4-20 - Hardware
070-011-108	Washer- LBS	844-057-002	P Type Nyloc Nut 5/16-18 - Hardware
070-011-121	Plug- LBS	844-070-002	P Type Nyloc Nut 7/16-20 - Hardware
070-011-122	Rudder Arm - LBS	900-205-081SL	S-Lube Flange Bearing - LBS 
070-011-123	Rod Asm - LBS	900-208-091	Flange Bearing .503 x.690 x 9/16 - Dist, Bin & LBS
070-011-124	Rod- LBS	900-208-091SL	S-Lube Flange Bearing - LBS 
070-011-146	Ball door Paddle - LBS 	900-212-201SL	Flange Bearing .753 x 1 x 1.25 - LBS 
070-011-147	V-Belt Rudder Secondary (1380) - LBS & PBL	907-000-900	Key #910 HyPro - Front End Drive, LBS & Kicker
070-011-151	Space Rudder Drive - LBS	913-448-120	Spring Pin .250 x 3/4 - Hardware
070-011-225	Crank Adj Plate Weld-LBS	919-005-200	External Retaining Ring #5100-31 - Hardware
070-011-273	Tab- LBS	919-005-500	External Retaining Ring #5100-50 - Hardware
070-011-299	Brace Sensor - PBL & LBS	948-761-112	Washer Wrought 5/16 - Hardware
070-011-319	Rudder Arm Support Bracket - LBS	948-767-132	Washer 3/8 - Hardware
070-011-406	Rudder Cam Asm RH - LBS	949-100-002	Washer 3/8 - Hardware

DB - Satisfaction Guaranteed

RATCHET DRIVE ASSEMBLY

Pinspotter Parts for AMF Equipment



000-024-679



000-026-865



070-006-142



070-011-013



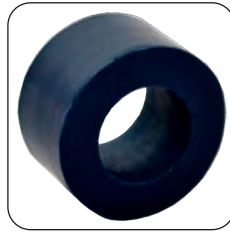
070-011-027



070-011-028



070-011-029



070-011-030



070-011-031



070-011-032



070-011-033



070-011-036



070-011-039



070-011-040



070-011-064



070-011-217



907-000-200

RATCHET DRIVE ASSEMBLY

Pinspotter Parts for AMF Equipment

000-024-679	Ball bearing .625 x 1.375 - Dist & Kicker	070-011-039	Ratchet Complete Asm
000-026-865	Thrust washer 1/4 x 7/8 - Dist & Ratchet	070-011-040	Nylon Roller - Ratchet
070-006-142	Bumper - Multi Position	070-011-064	V-Belt #1450 Motor To Pulley - Ratchet & PBL
070-011-013	Crank Weldment - Ratchet	070-011-217	Ratchet Arm Weldment - Ratchet
070-011-027	Ratchet Shaft - Ratchet	809-849-205	Hex Head Cap Screw 1/4-20 x 1-1/4 - Hardware
070-011-028	Washer - Ratchet	838-866-002	P Type Nyloc Nut 3/8-24 - Hardware
070-011-029	Ratchet Nut - Ratchet	907-000-200	Key #404 HyPro - Shuttle & Ratchet
070-011-030	Roller - Ratchet	919-000-600	Internal Retaining Ring #5000-137 - Hardware
070-011-031	Spacer - Ratchet	919-005-200	External Retaining Ring #5100-31 - Hardware
070-011-032	Spring - Ratchet	919-005-800	External Retaining Ring #5100-75 - Hardware
070-011-033	Pulley - Ratchet	948-767-132	Washer 3/8 - Hardware
070-011-036	Bearing & Housing Asm - Ratchet		

OLD STYLE KICKER BALL LIFT

Pinspotter Parts for AMF Equipment



000-022-080



000-022-099



000-024-673



000-024-679



000-025-638



000-027-710



000-028-771



000-028-864



000-028-865



000-029-601



000-029-611



000-029-614



000-029-959

Pinspotter Parts for AMF Equipment

000-022-080 Rubber Roller - Kicker

000-022-099 Belt V Pitch 112 - Carpet Drive Westinghouse - PBL & Kicker

000-024-673 Spring - Dist - PBL & Kicker

000-024-679 Ball bearing .625 x 1.375 - Dist & Kicker

000-025-638 Rubber Bumper 3/16 - Kicker

000-017-710 Belt-V 36 Outside - Kicker

000-028-771 Sheave - PBL

000-028-864 Belt V-Pitch - Kicker

000-028-865 Belt V-Pitch - Kicker

000-029-601 Spring - Kicker

000-029-611 Uni-ball Brg Washer - LBS & Kicker

000-029-614 Unibal Bearing 3/8 ID x 1.00 OD - Bin & Kicker

000-029-959 Pad Filler Asm - Kicker

808-957-160 Flat Head Socket Cap Screw With Patch 5/16-18 x 1 - Hardware

809-849-145 Hex Head Cap Screw 1/4-20 x 7/8 - Hardware

809-857-205 Hex Head Cap Screw 5/16-18 x 1-1/4 - Hardware

809-865-245 Hex Head Cap Screw 3/8-16 x 1-1/2 - Hardware

809-865-405 Hex Head Cap Screw 3/8-16 x 2-1/2 - Hardware

839-665-002 Flex Lock Nut 3/8-16 - Hardware

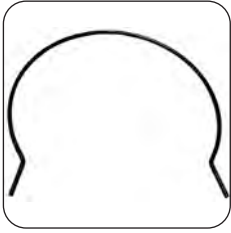
919-005-600 External Retaining Ring #5100-62 - Hardware

948-761-112 Washer Wrought 5/16 - Hardware

DB - Developed in the United Kingdom

TRACK RAIL ASSEMBLY

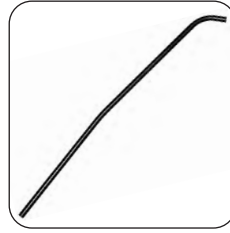
Pinspotter Parts for AMF Equipment



000-021-814



000-024-663RC



000-024-666



000-024-668



000-026-446



022-006-007SL



070-002-784



070-004-669



070-004-670



070-011-048



070-011-063



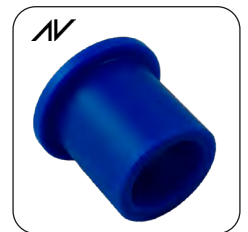
070-011-218



088-001-230



090-005-250



900-210-161SL

Pinspotter Parts for AMF Equipment

000-021-814	Wiper Ring - PBL	070-011-440	Please refer to: 000-024-663RC
000-024-663RC	One Piece Blue Rail - Ball Track	088-001-230	Thimble Ball Guide - PBL Rail Track
000-024-666	Track Rail Weldment - PBL	090-005-250	Rod End 3/8 RH - Track Rail
000-024-668	Track Support Bracket - Track	808-857-280	Screw FSH 5/16-18 x 13/4 - Hardware
000-026-446	Rod End RH 3/8 Female - Bin & Track Rail	809-865-165	Hex Head Cap Screw 3/8-16 x 1 - Hardware
022-006-007SL	S-Lube Kit - Track Rail Assembly	809-865-992	Hex Head Cap Screw 3/8-16 x 9 - Hardware
070-002-784	Grip Liner - Ball Track	835-566-002	Jam Hex Nut 3/8-24 - Hardware
070-004-669	Cloth Monster Ball Wiper - PBL	838-866-002	P Type Nyloc Nut 3/8-24 - Hardware
070-004-670	Dust Trap - PBL	844-057-002	P Type Nyloc Nut 5/16-18 - Hardware
070-011-018	Please refer to: 088-001-230	844-065-002	P Type Nyloc Nut 3/8-16 - Hardware
070-011-048	Rod - PBL & Track Rail	900-210-161SL	Flange Bearing .628 x 1 BZ - PBL
070-011-063	Shaft - Track Rail	948-767-132	Washer 3/8 - Hardware
070-011-218	Arm Lever Weldment - PBL Track Rail	951-164-002	Spring Lock Washer 3/8 - Hardware

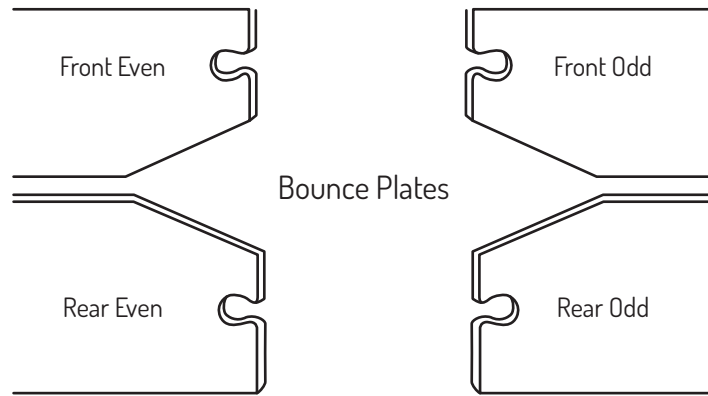
DB - Distributed Worldwide

PIT AREA



- 000-026-753TB
Transband Carpet Belt
- Easy to fit & ready to run
 - Wipe clean oil resistant PVC cover
 - Heavy enough to prevent idling pins
 - Light enough to prevent idling light weight balls

- AV** 000-026-753HD
Heavy Duty Carpet Belt
- Heavyweight flexible material
 - Strong seam
 - Long lasting performance

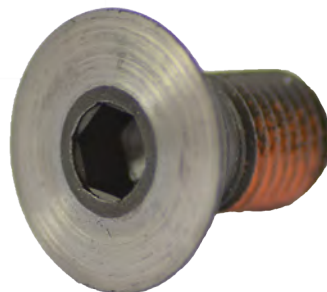


Bounce Plates

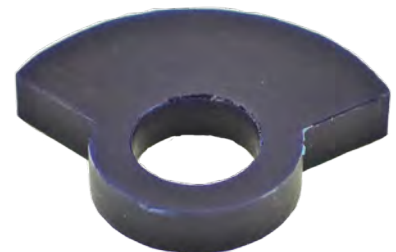
000-029-925	Armourlite Bounce Plate Front Even	090-005-271	Super Bounce Plate Front Even AV
000-029-926	Armourlite Bounce Plate Rear Even	090-005-273	Super Bounce Plate Rear Even AV
000-029-899	Armourlite Bounce Plate Front Odd	090-005-270	Super Bounce Plate Front Odd AV
000-029-924	Armourlite Bounce Plate Rear Odd	090-005-272	Super Bounce Plate Rear Odd AV



- AV** 000-024-597SL
Self-Lube Link
- Eliminates lubrication with smooth action



- AV** 000-025-662C
Nyloc Screw Pre Ground
- Flush fit saves time



- AV** 000-024-581
Dampener Urethane Front Roller Hinge
- Reduces travel and premature knocking

PIT AREA

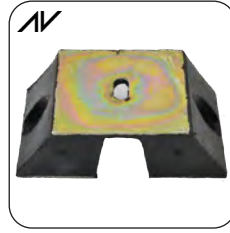
Pinspotter Parts for AMF Equipment



000-021-204



000-021-224



000-021-224HD



000-021-914



000-024-576



000-024-578



000-024-582



000-024-590



000-024-592



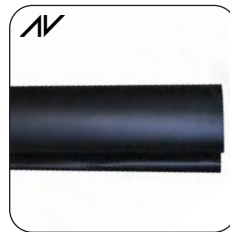
000-024-597



000-025-622



000-025-662



000-026-753HD



000-029-626



000-029-898



070-002-034



070-002-097



610-704-014



000-027-645
000-027-646



000-022-878



000-022-924



000-022-926



000-023-464
000-023-465

DB - High Performance Bowling Parts

PIT AREA

Kickback



000-023-467



000-024-508



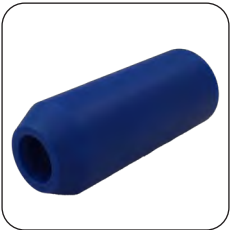
000-024-512



000-024-515



000-024-516



000-025-803



000-027-641



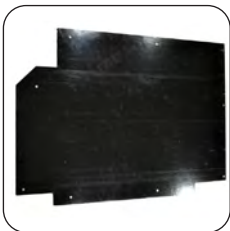
000-029-015



000-029-015K



000-029-317



070-002-027



090-004-131

DB - Satisfaction Guaranteed

PIT AREA

Pinspotter Parts for AMF Equipment

000-021-204	Spring Carpet Drive - Kickback	000-029-015K	Pivot Stud Kit - Kickback 
000-021-224	Dampener Vibration Original - Bounce Plate	000-029-317	Stop Pin Ejector - Kickback
000-021-224HD	Dampener Vibration Heavy Duty - Bounce Plate 	000-029-626	Support Angle - Bounce Plate
000-021-914	Channel - Bounce Plate	000-029-898	T-Bar Reinforcing 40.5 - Bounce Plate
000-022-878	Angle - Kickback	000-029-899	Armourlite Bounce Plate Front Odd
000-022-924	Urethane Bearing Support - Kickback 	000-029-924	Armourlite Bounce Plate Rear Odd
000-022-926	Retainer Support - Kickback	000-029-925	Armourlite Bounce Plate Front Even
000-023-464	Support Weldment RH - Kickback	000-029-926	Armourlite Bounce Plate Rear Even
000-023-465	Support Weldment LH - Kickback	070-001-450	Please refer to: 090-004-131
000-023-467	Bushing .314 x.434x.310 - Kickback	070-001-451	Please refer to: 090-004-131
000-024-508	Pin Ejector Asm RH & LH - Kickback	070-002-027	Panel - Kickback
000-024-512	Spring LH Pin Ejector Asm LH - Kickback	070-002-034	70's/90's Rear Roller Asm With Bearings
000-024-515	Bushing Long .44 x .56 x 3/4 - Kickback	070-002-097	Sheave Pulley - Carpet Drive & PBL
000-024-516	Bushing Short .44 x .56 x 3/8 - Kickback	070-007-847	Rubber Fastner - Bounce Plate
000-024-576	Front Roller Complete Asm - Front Roller	090-004-131	Pit Support Universal RH/LH Frt/Bk 82-70 or 90 - Kickback 
000-024-578	Front Roller Body - Front Roller	090-005-270	Super Bounce Plate Front Odd 
000-024-581	Dampener Urethane Front Roller Hinge - Front Roller 	090-005-271	Super Bounce Plate Front Even 
000-024-582	Link Roller Pin - Front Roller	090-005-272	Super Bounce Plate Rear Odd 
000-024-590	Ball Bearing .7874 x 1.8504 - Front Roller, Metal caged bearing	090-005-273	Super Bounce Plate Rear Even 
000-024-592	Hinge Asm - Front Roller	090-006-124	Please refer to: 000-026-753TB
000-024-597	Bronze Link - Front Roller	610-704-014	Ball Idling Kit - Bounce Plate
000-024-597SL	Self-Lube Link - Front Roller 	806-265-160	Square Head Cap Screw 3/8-16 x 1 - PBL & Rear Roller
000-025-622	Strap Bonding - Bounce Plate	808-849-160	Flat Head Socket Cap Screw 1/4-20 x 1 - Hardware
000-025-662	Nyloc Screw - Front Roller	809-849-165	Hex Head Cap Screw 1/4-20 x 1 - Hardware
000-025-662C	Nyloc Screw Pre Ground - Front Roller 	809-849-205	Hex Head Cap Screw 1/4-20 x 1-1/4 - Hardware
000-025-803	Roller Pin Ejector - Kickback	809-849-325	Hex Head Cap Screw 1/4-20 x 2 - Hardware
000-026-753HD	Heavy Duty Transband Carpet Belt - Bounce Plate 	809-857-205	Hex Head Cap Screw 5/16-18 x 1-1/4 - Hardware
000-026-753TB	Transband Carpet Belt - Bounce Plate 	844-049-002	P Type Nyloc Nut 1/4-20 - Hardware
000-027-641	Thrust Bearing .752 x 2.75 x .062 - Kickback	844-057-002	P Type Nyloc Nut 5/16-18 - Hardware
000-027-645	Bracket Support Asm LH Self-Lube - Kickback 	913-411-100	Spring Pin .078 x 5/8 - Hardware
000-027-646	Bracket Support Asm RH Self-Lube - Kickback 	948-753-102	Washer 1/4 - Hardware
000-027-647	Front Roller Safety Tool - Tool	948-761-112	Washer Wrought 5/16 - Hardware
000-029-015	Pivot Stud - Kickback		

DB - Better Value Parts

CUSHION ASSEMBLY



AV 000-024-795 / 000-024-796
Cushion Plank HD Laminate LH & RH
• High density sealed blue laminate



AV 000-022-770
Sponge Rubber Cushion Pad
• Higher density heavy foam for increased impact absorption



AV 000-022-821
Cushion Shock Pin Asm
• With R clips & washers for easy fitting



AV 000-024-807 / 000-024-808
Cushion Rubber LH & RH
• Sheet cut rubber for strength



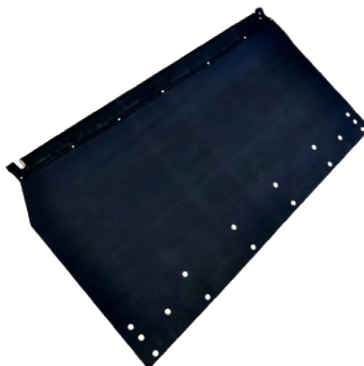
AV 070-006-761
Cushion Facing
• Heavy duty abrasion resistant



000-028-529
Non-stick urethane rivet
• Soft, non-stick & hard wearing



AV 000-026-445D
Deflector Curtain
• New style hanging design



000-026-445
Pin Curtain
• Old style glued, stitched and riveted



AV 022-610-007
Easy Nut Kit - Cushion
• Quick Change

CUSHION ASSEMBLY

Pinspotter Parts for AMF Equipment



000-021-431



000-022-822



000-022-823



000-022-824



000-024-534



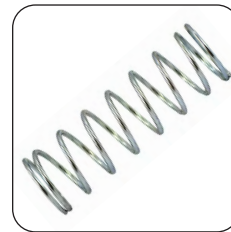
000-024-801



000-024-807
000-024-808



000-026-043



070-001-389



070-001-432



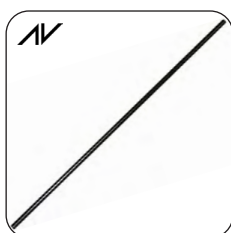
070-002-050



070-002-252



070-005-610



070-011-288



721-502-005

Kickback



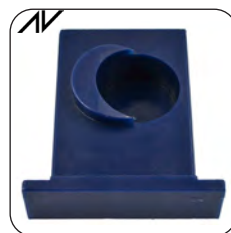
000-000-203ASM



000-022-300



000-022-788



000-022-794
000-022-795



070-011-286

CUSHION ASSEMBLY

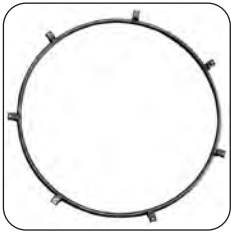
Pinspotter Parts for AMF Equipment

000-000-203ASM	Quick Release RH & LH Asm - Cushion 	000-028-519	Please refer to: 000-028-529
000-021-431	Spring Cushion Roller - Cushion, Shock & Solenoid	000-028-529	Non-Stick Urethane Rivet - Cushion
000-021-992	Blue Urethane Grommet - Bin & Pin Elevator	070-001-389	Spring - Curtain Latch & Cushion
000-022-300	Shield Cushion Block - Kickback	070-001-432	Rubber Pad Asm - Cushion
000-022-770	Sponge Rubber Cushion Pad - Cushion 	070-002-050	Tube Weldment Hanger RH - Cushion
000-022-788	Support Box - Kickback	070-002-252	Tube Weldment Hanger LH - Cushion
000-022-794	Block Support Urethane RH - Kickback 	070-005-610	Blue Link Curtain - Cushion
000-022-795	Block Support Urethane LH - Kickback 	070-006-761	Cushion Facing Heavy Duty - Cushion 
000-022-821	Cushion Shock Pin Asm - Cushion 	070-011-286	Curtain Rod Support - Kickback 
000-022-822	Sleeve - Cushion Shock	070-011-288	Extra Strong Curtain Rod - Cushion 
000-022-823	Shock Absorber With Collar - Cushion	721-502-005	Rubber Bushing - Cushion Shock 
000-022-824	Shock Absorber Complete Asm - Cushion	808-865-320	Flat Head Socket Cap Screw 3/8-16 x 2 - Hardware
000-024-534	Ear Hanger - Cushion	808-865-400	Flat Head Socket Cap Screw 3/8-16 x 2 1/2 - Hardware
000-024-795	Cushion Plank HD Laminate LH 	809-857-125	Hex Head Cap Screw 5/16-18 x 3/4 - Hardware
000-024-796	Cushion Plank HD Laminate RH 	839-665-002	Flex Lock Nut 3/8-16 - Hardware
000-024-801	Plank Washer - Cushion	844-057-002	P Type Nyloc Nut 5/16-18 - Hardware
000-024-807	Cushion Rubber RH - Cushion	913-431-160	Spring Pin .156 x 1 - Hardware
000-024-808	Cushion Rubber LH - Cushion 	913-437-240	Spring Pin .187 x 1 1/2 - Hardware
000-026-043	Micro Switch Big Tip - Bin & Cushion	948-975-172	Washer 1/2 - Hardware
000-026-445	Pin Curtain, Glued, Stitched & Riveted - Cushion	951-164-002	Spring Lock Washer 3/8 - Hardware
000-026-445D	Deflector Curtain - Cushion 	963-600-002	X - Washer 1/4 9000-16 - Hardware

DB - Distributed Worldwide

PIN WHEEL ASSEMBLY 70'S

8270



000-020-855



000-021-211N



000-021-992



000-023-673



000-024-513



000-026-032



810-250-200



000-028-362



000-029-068



070-001-195



070-002-005



070-006-030



070-006-046

Pinspotter Parts for AMF Equipment

000-020-855	Ring Tube Weldment - Pin Elevator	809-849-125	Hex Head Cap Screw 1/4-20 x 3/4 - Hardware
000-021-211N	Nylon Roller - Pin Elevator	809-857-165	Hex Head Cap Screw 5/16-18 x 1 - Hardware
000-021-992	Blue Urethane Grommet - Bin & Pin Elevator	809-857-405	Hex Head Cap Screw 5/16-18 x 2-1/2 - Hardware
000-023-673	Pin Elevator Drive Pulley - Motor	809-858-085	Hex Head Cap Screw 5/16-24 x 1/2 - Hardware
000-024-513	Spring RH Pin Ejector Asm RH - Back End	809-858-125	Hex Head Cap Screw 5/16-24 x 3/4 - Hardware
000-026-032	Lateral Drive Spring - Motor Bracket	809-865-725	Hex Head Cap Screw 3/8-16 x 4-1/2 - Hardware
810-250-200	Pin Wheel Bolt 1/4-28X7/8 - Pin Elevator	831-566-002	Hex Nut 3/8-24 - Hardware
000-028-362	Bumper Urethane Plug - Pin Elevator	834-557-002	Hex Nut 5/16-18 - Hardware
000-029-068	Rubber Mount - Pin Elevator	844-049-002	P Type Nyloc Nut 1/4-20 - Hardware
070-001-195	Pin Ejector	844-057-002	P Type Nyloc Nut 5/16-18 - Hardware
070-002-005	V-Belt Pin Wheel - Pin Elevator	913-437-280	Spring Pin .187 x 1 3/4 - Hardware
070-006-030	Spring Safety Link - Dist & Pin Elevator	948-761-112	Washer Wrought 5/16 - Hardware
070-006-046	Rod End Support - Pin Elevator & Shuttle	948-767-132	Washer 3/8 - Hardware
070-006-098	Rail RH Machine - Pin Elevator		

- Add value to your equipment

PIN WHEEL ASSEMBLY 90'S



090-007-327ASM

Roller Bearing Asm - Pin Elevator

- Designed to remove pin wheel play
- Fitted with bearing for improved motion
- Machined from high density polyethylene

8290



000-021-992



000-026-032



000-028-362



000-029-068



070-002-005



090-005-108



090-005-256



938-523-050

DB - Satisfaction Guaranteed

PIN WHEEL ASSEMBLY 90'S

Pinspotter Parts for AMF Equipment

000-021-992	Blue Urethane Grommet - Bin & Pin Elevator 	809-865-725	Hex Head Cap Screw 3/8-16 x 4-1/2 - Hardware
000-026-032	Lateral Drive Spring - Motor Bracket & Pin Elevator	831-566-002	Hex Nut 3/8-24 - Hardware
000-028-362	Bumper Urethane Plug - Pin Elevator	834-527-002	Hex Nut #6-32 - Hardware
000-029-068	Rubber Mount - Pin Elevator	844-057-002	P Type Nyloc Nut 5/16-18 - Hardware
070-006-098	Rail RH Machine - Pin Elevator	844-065-002	P Type Nyloc Nut 3/8-16 - Hardware
090-002-065	Please refer to: 070-002-005	938-523-050	Pop Rivet Open End 1/8 x 5/16 - Hardware
090-005-108	Pin Wheel Strip Green - Pin Elevator 	948-761-112	Washer Wrought 5/16 - Hardware
090-005-256	Rod End Support - Pin Elevator & Shuttle	948-767-132	Washer 3/8 - Hardware
090-007-327ASM	Roller Bearing Asm - Pin Elevator	951-156-002	Spring Lock Washer 5/16 - Hardware
809-857-325	Hex Head Cap Screw 5/16-18 x 2 - Hardware	951-181-002	Spring Lock Washer 5/8 - Hardware
809-857-405	Hex Head Cap Screw 5/16-18 x 2-1/2 - Hardware		

BUMPER ASSEMBLY



AV 049-000-000
Auto Bumper Upgrade LH/RH - Bumper Upgrade
• Thicker Stainless Steel with no twist

AMF Bumper Upgrade



049-007-002



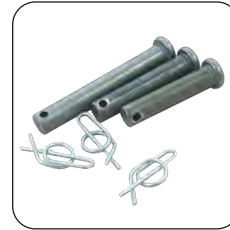
049-007-003



049-007-007



049-007-008



049-007-010

AMF Bumper Upgrade

049-000-000	Auto Bumper Upgrade LH/RH - Bumper Upgrade AV
049-007-002	Bracket Lever - Bumper Upgrade
049-007-003	Pivot Bush - Bumper Upgrade

049-007-007	Spring - Bumper Upgrade
049-007-008	Shackle Connector - Bumper Upgrade
049-007-010	(Pack 3) Bumper Clevis Pin Kit - Bumper Upgrade

BUMPER ASSEMBLY



049-007-075
Bumper Rail Common Solid Section - Grey
• Durable solid bumper rail



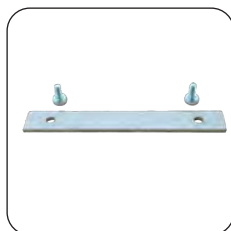
AV 049-007-081HD
Heavy Duty Upright Bracket Assembly
• Durable upgrade to original



AV 049-007-091G
Bumper Rail RH Solid Frt Section - AMF Bumper - Grey
• Durable solid bumper rail



AV 049-007-092G
Bumper Rail LH Solid Frt Section - AMF Bumper - Grey
• Durable solid bumper rail



049-007-000



049-007-029



049-007-068



049-007-081



049-007-093



708-803-006



718-810-033

Parts for AMF Bumper Systems

049-000-002	Hardware 100X14X2mm - Bumper Upgrade	049-007-081HD	Heavy Duty Upright Bracket Assembly AV
049-007-000	Bumper Rail Support 100 x 14 x 2mm	049-007-091G	Bumper Rail RH Solid Frt Section - AMF Bumper- Grey AV
049-007-010	(Pack 3) Bumper Clevis Pin Kit - Bumper Upgrade	049-007-092G	Bumper Rail LH Solid Frt Section - AMF Bumper - Grey AV
049-007-029	Connection Bracket ASM - Bumper	049-007-093	H Bracket Kit - AMF Bumper AV
049-007-068	Bumper Return Spring - AMF Bumper	049-007-178	Please refer to: 049-007-068
049-007-075	Bumper Rail Common Solid Section - Grey	708-803-006	Air Cylinder A/B - Durabowl Auto Bumpers
049-007-081	Upright Bracket improved with Bearing - AMF Bumper	718-810-033	Elbow Joint 1/8 NPT x 1/4 Tube - Durabowl Auto Bumper

DB - High Performance Bowling Parts

BALL RETURN

Powerlift / C90 / Profile / Options / Spectrum



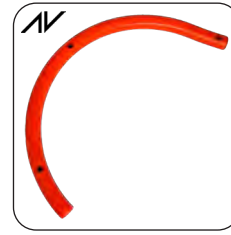
250-000-000



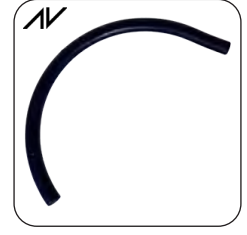
250-001-009



250-001-011



250-001-012



250-001-013



250-001-015



250-001-023



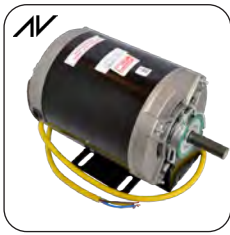
250-001-027



250-001-034



250-001-037



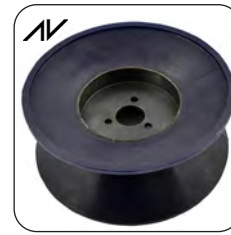
250-001-040



250-001-109



250-001-131



250-001-163



250-001-051R



250-001-053



250-001-060



250-001-230



250-001-232



250-001-233



250-001-234



250-001-236



250-001-537



250-001-777



702-504-012

DB - Satisfaction Guaranteed

BALL RETURN

Powerlift / C90 / Profile / Options / Spectrum



250-001-435L



702-504-013



702-504-014

Powerlift / C90 / Profile / Options / Spectrum

250-000-000	Safety Brace - Powerlift	250-001-233	Shaft Key CBL-13 - Powerlift
250-001-000	Ball Rack Repair Kit - Options & Profile	250-001-234	Clutch Sleeve CBL-11 - Powerlift
250-001-009	Upper Shaft SA CBL-A9 - Powerlift	250-001-236	V-Wheel Options - Powerlift
250-001-011	Idler - Powerlift	250-001-435L	Spin Out Rail - Powerlift
250-001-012	Upper Track Red C Rail - Powerlift	250-001-537	Single Groove Cast Iron Sheave 1.75 - Powerlift
250-001-013	Lower Track Blue C Rail - Powerlift	250-001-777	C90 Fan 220V (Square) - Powerlift
250-001-015	Lower Shaft SA CBL-A8 - Powerlift	702-504-012	Belt-V Type A 69.3 PD - Spectrum
250-001-023	Spacer Bracket CBL-12 - Powerlift	702-504-013	Belt-V Type A 35.3 PD - Spectrum
250-001-027	Idler Nut - Powerlift	702-504-014	Belt-V Type A 34.3 PD - Spectrum
250-001-034	Rail Spacer CBL-47 - Powerlift	808-549-160	Button Head Cap Screw 1/4-20 x 1 - Hardware
250-001-037	Premium Double V-Belt AA90 - Powerlift	808-557-360	Button Head Cap Screw 5/16 -18 x 2 1/2 - Hardware
250-001-037G	Please refer to: 250001037	809-849-145	Hex Head Cap Screw 1/4-20 x 7/8 - Hardware
250-001-040	Ball Return Motor - Powerlift	809-849-165	Hex Head Cap Screw 1/4-20 x 1 - Hardware
250-001-163	Blue Chunky V-Wheel - Ball Return	809-857-125	Hex Head Cap Screw 5/16-18 x 3/4 - Hardware
250-001-051R	V-Wheel Red - Powerlift	809-857-165	Hex Head Cap Screw 5/16-18 x 1 - Hardware
250-001-053	Clutch Housing With Bearing CBE5 - Powerlift	809-857-205	Hex Head Cap Screw 5/16-18 x 1-1/4 - Hardware
250-001-060	Hub (CBL-6) - Powerlift	809-865-245	Hex Head Cap Screw 3/8-16 x 1-1/2 - Hardware
250-001-085	Please refer to: 250001011	839-057-002	Please refer to: 844-057-002
250-001-108	Idler Stud CBL-77 - Powerlift	844-073-002	P Type Nyloc Nut 1/2-13 - Hardware
250-001-109	Transition Bracket Assy. Urethane Pad (insert) - Ball Return	948-761-112	Washer Wrought 5/16 - Hardware
250-001-131	Options/Profile Flat Belt - Ball Return	951-148-002	Spring Lock Washer 1/4 - Hardware
250-001-230	Hub Shaft CBL-4 - Powerlift	951-156-002	Spring Lock Washer 5/16 - Hardware
250-001-232	Bearing Spacer CBL-9 - Powerlift		